



**Operation  
Food Search**

40 Years Of Healing Hunger

**Searching for a Future  
Free from Hunger**

# Our Mission

To nourish and educate  
our neighbors in need to  
heal the hurt of hunger

Operation Food Search provides immediate food assistance to individuals and families, serving 200,000 people every month. We also work to address the underlying causes of hunger that impact the ability to put food on the table. Through programs, partnerships and policy change, we strive to ensure that all bistate-area children and adults have the nutrition, food and skills needed to live healthy lives.



## Our Year in Review

2021 marked the 40th anniversary of Operation Food Search's incorporation as a nonprofit organization, and it was a year of both celebrations and continued challenges. As we began our fiscal year (Oct. 1, 2020), we remained fully immersed in the adversities of the pandemic, along with the rest of the world. Those challenges continue today, beyond what many of us expected. Yet we have found hope and inspiration in doing our work and in the resiliency we see all around us.

The need has increased, but so have the solutions to the problem of hunger. We've seen greater numbers of new donors, created more partnerships and expanded our programs, enabling us to not just face the trials of this ordeal, but to move further upstream to address the underlying causes of food insecurity.

In this report, you'll learn more about our continued adaptation to the demands of the pandemic, our outstanding partners and our generous supporters. Most of all, you'll see how our strategic approach to going beyond meeting the immediate need is designed to ensure that all those who are working hard to put food on the table can do so, today and in the long term.

Forty years ago, the founders of OFS began this quest in search of food for the hungry. They could not have predicted the need that would still exist today. But what they did know remains true four decades later: the solution lies in the community of caring people who are committed to helping others. We are privileged to be a part of that community and to have your partnership in creating a future free from hunger.

Kristen V. Wild, President & CEO

Alan Schultz, Board Chair

# Our Leadership

## Senior Leadership Team



**Kristen Wild**  
President & CEO



**Carlton Adams**  
Chief Operating  
Officer



**Julie Mann**  
Chief Financial  
Officer



**Trina Ragain**  
Chief Innovation  
Officer



**Ellen Reed-Fox**  
Chief Development  
Officer



**Jocelyn Fundoukos**  
Director of  
Communications



**Kristen Frazier**  
Human Resource  
and DEI Manager

## Board of Directors

### Officers

**Chair:**  
**Alan Schultz**  
Bayer

**Vice Chair:**  
**Erin Brooks**  
Bryan Cave  
Leighton  
Paisner LLP

**Treasurer:**  
**Amy Altholz**  
RubinBrown

**Secretary:**  
**Julie Hoff**  
CultivateHR

### Members

**Dr. Kelvin Adams**  
St. Louis Public  
Schools

**Laura Bryant**  
Formerly Enterprise  
Holdings

**Nik Brym**  
Wee Ones

**Ryan Cuba**  
Schnuck Markets Inc.

**Lisa Pelikan**  
Edward Jones

**Skip Spielberg**  
Formerly Bueno Bags

**Steve Spratt**  
Ascension

**Jessica Stephan**  
Bunge

**Rick Stevens**  
Christian Hospital

## Friends Board

### Officers

**Chair:**  
**Amanda Ruby**  
Bayer

**Vice Chair:**  
**Katie Hebson**  
AIG

**Secretary:**  
**Shelby Akos**  
Bally Sports Midwest

**VP of Membership:**  
**Barrett Feltmeier**  
Edward Jones

### Members

**Clayton Bax**  
Commerce Bank

**Sean Berry**  
Nidec Corporation

**Alyssa Burks**  
TD Ameritrade

**Tess Coyman**  
Select Specialty  
Hospital

**Kelly Cubellis**  
Allspring Global  
Investments

**Julie Feltmeier**  
Enterprise Holdings Inc.

**Brittany Forrest**  
Riverfront Times

**Madeleine Garbo**  
Ernst & Young

**Suzanne Hart**  
Bryan Cave Leighton  
Paisner LLP

**Rica Hendrix**  
Brighter Vision  
Psychological Services

**Katie Holtgrave**  
Anders CPAs +  
Advisors

**Katie Mueller**  
BJC Healthcare

**Alex Rich**  
Audacity Inc.

**Austin Schultz**  
GadellNet

**Cole Silverman**  
SSM Health Rehabilitation

**Mitch Slattery**  
Edward Jones

**Chris Sawicki**  
Anheuser-Busch

**Mark Taylor**  
Centene Corporation

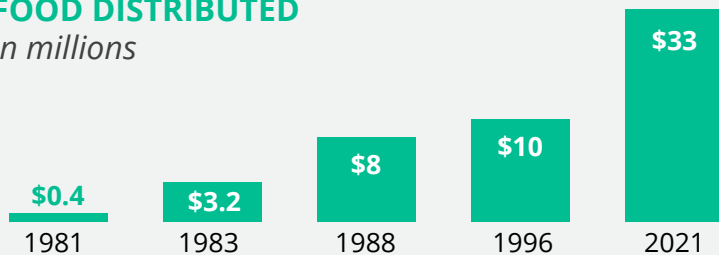
**Scott Whitehill**  
Arthur J. Gallagher  
& Co.

# Our History

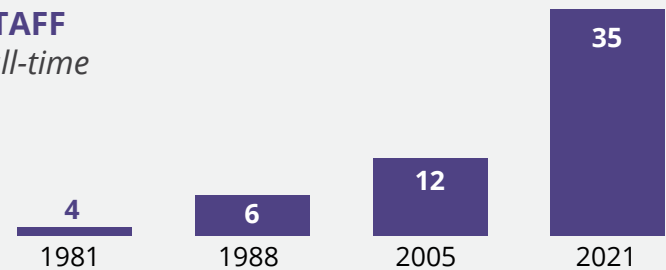
## Four Decades of Work to Increase Food Access

More than 40 years ago, dedicated members of a coalition of individuals of the Catholic, Protestant and Jewish faiths initiated an organized search for food to help the hungry. What began as the St. Louis United Hunger Effort became Operation Food Search in 1981. Since then, OFS has worked tirelessly to fill a vital need in the bistate community. Now, OFS is going beyond searching for food: *We are searching for solutions.*

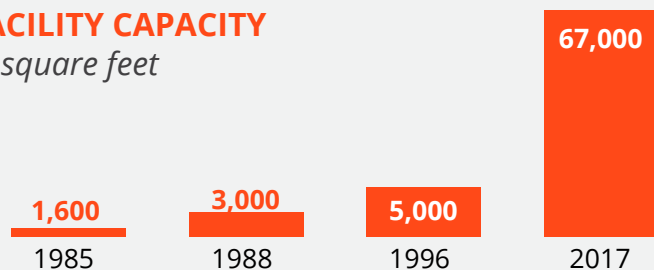
**FOOD DISTRIBUTED**  
*in millions*



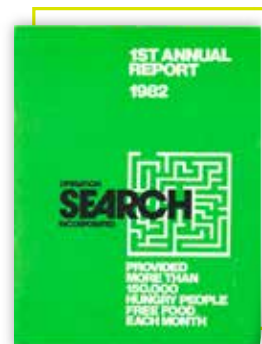
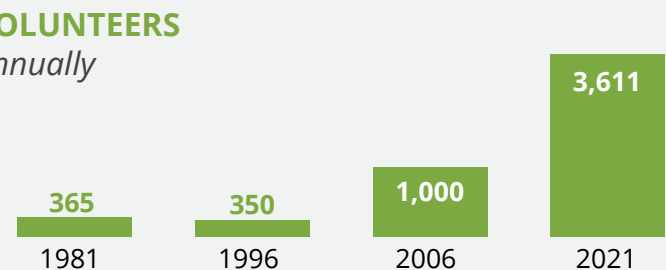
**STAFF**  
*full-time*



**FACILITY CAPACITY**  
*in square feet*



**VOLUNTEERS**  
*annually*





## The Path Toward Better Solutions

As we continue our work to heal hunger, we remain true to our origin as a rescue food bank while also addressing the social determinants of health. We provide food and related services to more than 200,000 individuals every month — one-third of whom are children — through a network of 330 community partners in 27 Missouri and Illinois counties. In addition, our community nutrition programs empower individuals and families to eat healthier food on a budget. Our policy and advocacy work strengthens support for safety-net programs and increases opportunities for everyone to put food on the table and live healthier lives.

There is no question that hunger is a very serious problem. But with persistence, dedication, collaboration and creativity, hunger is solvable. And with the help of our partners, volunteers, donors and community members, OFS is finding solutions and helping to create a healthier, more vibrant region.



## OFS Service Area

### Missouri Counties

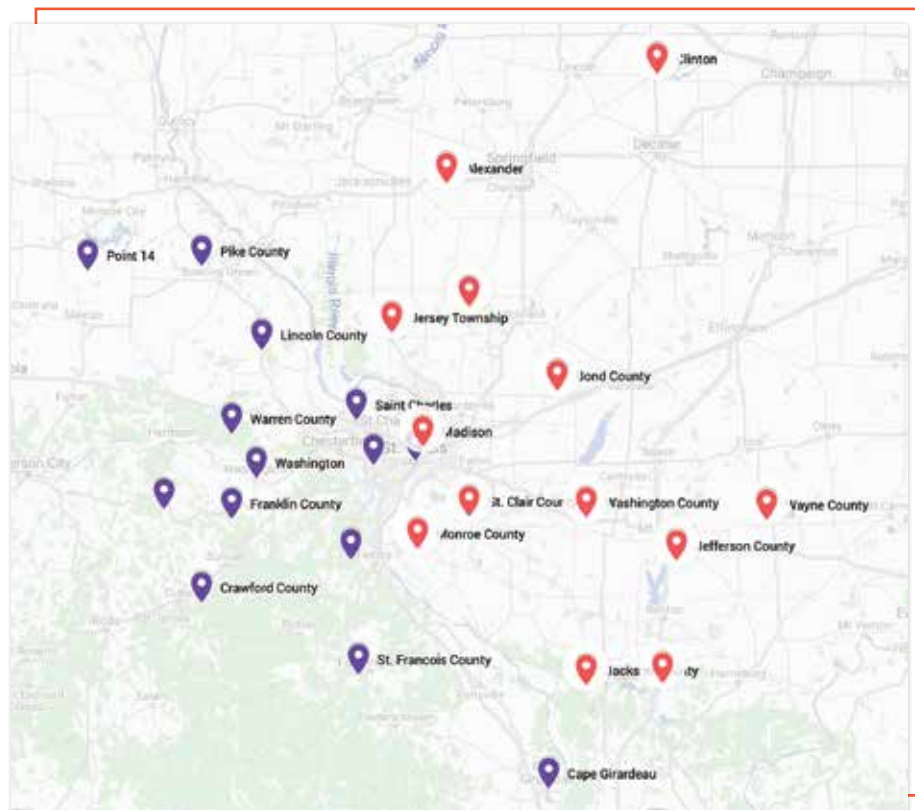
Cape Girardeau  
Crawford  
Franklin  
Gasconade  
Jefferson  
Lincoln  
Montgomery

Pike  
St. Charles  
St. Francois  
St. Louis City  
St. Louis County  
Warren  
Washington

### Illinois Counties

Alexander  
Bond  
Clinton  
Jackson  
Jefferson  
Jersey  
Macoupin

Madison  
Marion  
Monroe  
St. Clair  
Washington  
Wayne



# Our Impact

FY 2021 in Review (Oct. 1, 2020 - Sept. 30, 2021)

**\$33** million+

in food  
distribution



**18,439**

queries on our  
Hunger Hotline,  
text line and  
Find Food map



**21,856**

pounds of produce  
rescued from  
local farms



## SUMMER MEALS

**843,240**

child meals  
served



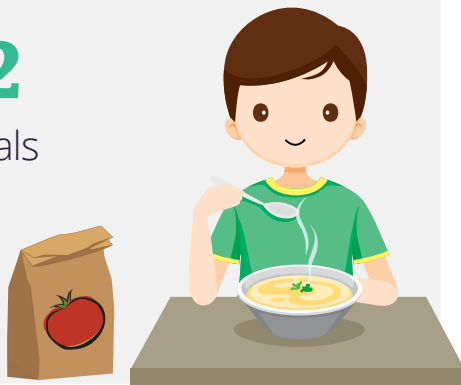
Additional food provided  
at Summer Meal sites and  
other distributions

## AFTERSCHOOL REFUEL

served

**8,152**

child meals



## OPERATION BACKPACK

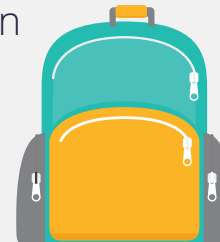
distributed

**589,035**

meals to students in

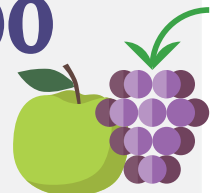
**338** schools in

**15** counties



**1,104,700**

pounds of  
produce



**106,836+**

family food  
boxes



Child meal sites included

**488** locations in

**15** counties



Child Meal Map had

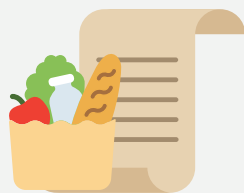
**4,085**

online visits



## ADVOCACY

**23** nutrition- & health-related bills **7** of those bills submitted testimony

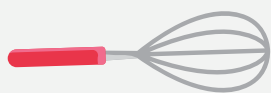


**5** of those bills passed session including legislation creating a Statewide Food Security Task Force

conducted **40** interviews with WIC participants

## COMMUNITY NUTRITION

**1,701** people empowered by programs **483** classes & store tours in 21 counties



**36** cooking and quick-tip videos



**13,963** total interactions on social media posts featuring nutrition education

## FRESH RX

*Food Is Medicine Programs for Pregnant Women, Children and Families*

**108** expectant families participated in Fresh Rx: Nourishing Healthy Starts



**38.2**  
**WEEKS**

median gestational age of infants born to Fresh Rx graduates

*37 weeks is considered full term.*

**93%** of infants born at a healthy birth weight



**8,820** meals distributed

*compared to the rate of 83.7% of births for women living in the city of St. Louis who received their care through the Medicaid for Pregnant Women program in 2018*

**116%** reduction in maternal depression & anxiety symptoms

**57%** reduction in severity of household food insecurities

# Our Programs

## Meet the Immediate Need

All Operation Food Search initiatives support our strategy to alleviate food insecurity and address the underlying causes of hunger. This work aligns under three pillars: Meet the Immediate Need, Build Nutrition IQ and Champion Change.



### AfterSchool ReFuel

To reduce health issues stemming from undernutrition, OFS provides free shelf-stable, grab-and-go meals to children on weekdays during the academic year. Known as AfterSchool ReFuel, the program is available at no cost to children ages 5-18 at 15 area locations. These “super snacks” — which include milk, protein, fruit, vegetable and grain — supply the energy and nutrition the children need to focus on homework and other after-school activities. More than 8,000 child meals were served through the program in FY2021.



### Operation Backpack

Since 2006, Operation Backpack has provided weekly sacks of kid-friendly, shelf-stable food to get students through the weekend, when school meals are unavailable. Participating children are discreetly given these backpacks to take home at the end of the school week, enabling them to return to school Monday with the good nutrition and focus needed for academic success. More than 589,000 meals were provided to 338 schools in 15 counties during this fiscal year.



### Summer Meals

This year marked OFS’s 10th year as a sponsor of the Summer Food Service Program. Funded by the USDA, the program ensures that children continue to receive nutritious meals when school is not in session. Kids are more at risk for hunger when school is out, and this program provides a crucial link to nutrition normally provided at schools. Of our 35 meal sites, 16 sites also distributed family food boxes and fresh produce boxes. Due to the pandemic, we extended our Summer Meals program and were able to expand our reach to other family members as well. OFS provided more than 843,000 meals from Oct. 1, 2020, to Sept. 30, 2021.





## Gleaning

Gleaning is rescuing fresh food from farms that would otherwise be unharvested or wasted. Produce gathered in the fields or picked up after the harvest is quickly distributed to food-insecure individuals and families in the region.

The benefits of gleaning include reducing food loss; increasing access to healthy, fresh, local food for food-insecure individuals and families; and creating tax benefits for farms that donate food. Since the start of the gleaning program in 2020, Operation Food Search staff and volunteers have rescued nearly 25,000 pounds of produce from local farms. Partners include Eckert's Family Farms, Liberty Apple Orchard and Three Rivers Community Farm.



## Community Food Partner Agencies

OFS's partner agencies—pantries, churches, shelters and other community food sites—are vital to our ability to get food to the community. As a food bank, Operation Food Search secures funding, rescues and sources food through a variety of ways, and then sorts and distributes food to our agencies. We also support them through training, capacity building, nutrition education resources and more. They then serve the community directly.

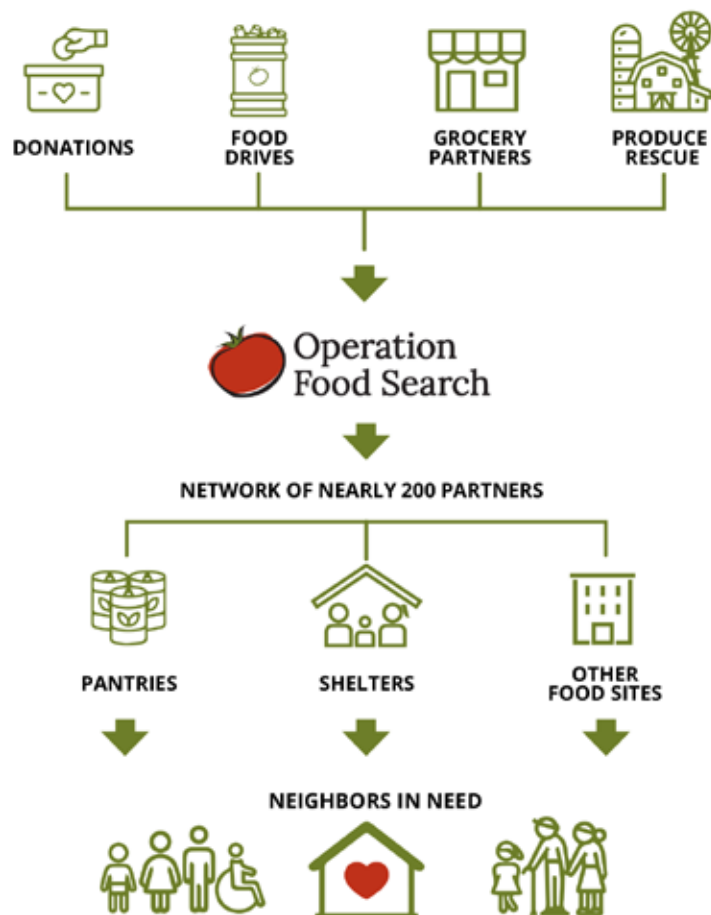
Our nearly 200 partner agencies are largely run by volunteers who often are older adults in higher-risk categories for COVID-19. This year, they were nothing short of heroic in their determination to help individuals and families struggling with food insecurity. These dedicated partners create 1.5 million human interactions each year. We could not do our work without them! **View a full list of our partner agencies on the next two pages.**

# Our Programs

## Meet the Immediate Need

### More About Our Community Food Partner Agencies

Our Community Food Partner Agencies are vital to our ability to get food to the community. The nearly 200 partner agencies, including pantries, churches, shelters and other community sites, are largely volunteer-run and require great dedication to the people they serve.



### Our Agencies

Affton Christian Food Pantry  
 Agape Help House of Pacific  
 Agape House Franklin County  
 Agape Ministry of Warren County  
 Agape SDA Pantry  
 Almost Home  
 Alton Guardian Angel Pantry  
 Anointed Hands  
 Arnold Food Pantry  
 Ascension Food Pantry  
 Baptist Ministries South Center  
 Berean Food Pantry  
 Bismarck Church of God Food Pantry  
 Blessed Teresa of Calcutta (Church St.)  
 Blessed Teresa of Calcutta (Elizabeth Ave.)  
 Bond County Food Pantry  
 Bostick Temple  
 Bread for Life Food Pantry  
 CAASTLC  
 Caring & Sharing  
 Caseyville Food Pantry  
 Cathedral of Y Shua Worship Center  
 Catholic Services of St. Clair  
 CCW Food Pantry  
 Centennial's Food Pantry  
 Chapel for the Exceptional (The Waymakers)

Chapel of the Lake  
 Church of the Living God Food Pantry  
 Circle of Concern  
 Circle of Light Associates  
 City Hope Bible Church, Inc.  
 City of Peace Food Pantry  
 City Temple Assembly of God  
 Collinsville Food Pantry  
 Community Care Center, Inc.  
 Community Helping Ministry  
 Community Hope Center  
 Community Interfaith Food Pantry  
 Community Outreach of Gerald  
 Cosgrove's Soup Kitchen  
 CPR Food Pantry  
 Crisis Food Center  
 Crisis Nursery  
 Dayspring Foursquare Pantry  
 Daystar Community Program  
 Deliverance Church  
 DeSoto Food Pantry  
 Diane's House  
 Dunn Road Manor  
 Elmwood Memorial Emergency Food Pantry  
 Elvins Food Pantry  
 Emmanuel Food Pantry  
 Emmaus Homes, Inc.  
 Epworth Drop-In Center  
 F.A.S.T. (Foster Adoption Support Team)

## Our Food Partner Agencies *(continued)*

Faith Church Earth City  
 Faith Church St. Louis  
 Family Food Pantry  
 Farmington Ministerial Alliance  
 Feed My People - Centralia  
 Feed My People - High Ridge  
 Feed My People - Lemay  
 First United Methodist Church  
 Gethsemane Church  
 Gillespie Care Center  
 Glen Ed Pantry  
 Good Samaritan Ministries  
 Grace Fellowship  
 Grace New Covenant Church  
 Grace U.M.C. Food Pantry  
 Great Things Incorporated  
 Guardian Angel @ Hosea House  
 H.O.P.E. Ministries  
 H.O.P.E. Ministry - Wentzville  
 Halls Ferry Manor  
 Harvester's Food Pantry  
 Helping Hands Food Pantry  
 Helping Hands of Ferguson  
 High Ridge Food Pantry  
 Hillsboro Food Pantry  
 Hilltop Manor  
 Hope Christian Church Food Pantry  
 Hope Church at Mills Mall  
 Hope Ministries of Geff, IL  
 ICNA Relief USA  
 Immaculate Conception of Dardenne  
 Immaculate Conception, SVDP  
 Immaculate Heart of Mary, SVDP  
 Isaiah 58 Ministries

Jackson Park Senior Apartments  
 Jefferson County Rescue Mission  
 Jewish Family Services  
 The Joseph Center  
 Keeping the Faith Empowerment Center  
 Labor of Love Ministries  
 Law & Grace Ministry at Faith Baptist Church  
 Lessie Bates Davis Neighborhood House Food Pantry  
 Life Center International COGIC  
 Life Wise STL  
 Love in Action  
 Loving Hearts Outreach  
 McBride Foundation  
 MCCB Transitions  
 Merry Makers New Cote Brillante COG  
 Millstadt Senior Services  
 Mind of Christ Church  
 Moscow Mills Community Food Pantry  
 Mt. Olive Care Center  
 Nash Prayer Band Church  
 New Jerusalem SDA  
 New Journey Baptist Church  
 Northside SDA  
 O.A.S.I.S. Food Pantry  
 O'Fallon Community Food Pantry, Inc.  
 Operation Food Sharing - Steelville 1st Assembly  
 Our Lady of Guadalupe, SVDP  
 Our Lady of Perpetual Help, SVDP  
 Our Lady's Inn

Our Lady's Inn - Defiance  
 Ozark Food Pantry  
 PCAC - Southside City Services  
 Peace Pantry  
 Pine Lawn Glen Echo Food Pantry  
 Powell Terrace Baptist Benevolence  
 Project Hope  
 Ritenour Co-Care Food Pantry  
 Riverview C.O.G.  
 Room at the Inn  
 Sacred Heart SVDP  
 Salvation Army Alton Pantry and Shelter  
 Salvation Army Family Haven, CIP  
 Salvation Army O'Fallon  
 Salvation Army St. Charles  
 Second Blessing  
 Second Presbyterian  
 Sister Christine's Pantry  
 Smithton Food Pantry  
 SonLight M.B. Church  
 Sorento Food Pantry  
 Soup-N-Share  
 St. Anthony Food Pantry  
 St. Augustine - Wellston Center  
 St. Augustine SVDP  
 St. Charles Senior Center  
 St. Francis Borgia Food Pantry  
 St. Joachim and Ann Care Service  
 St. John House of Hope  
 St. Joseph M.B. Church  
 St. Louis Adventist Community Services  
 St. Louis Empowerment Center  
 St. Louis Youth Build

St. Michael's Food Pantry SVDP  
 St. Nicholas Food Pantry  
 St. Patrick Center  
 St. Patrick's SVDP  
 St. Vincent DePaul Pantry - Farmington  
 Star Bethel Food Pantry  
 State Park Food Pantry  
 Storehouse Food Pantry  
 Sunshine Ministries  
 TEAM  
 Teen Challenge of Mid-America  
 Teen Challenge of St. Louis  
 Tri Food Pantry  
 Trinity Presbyterian Church  
 Universal Church of Jesus Christ  
 University City Senior Center  
 Urban League - City Division  
 Urban League Metro Community Outreach  
 Urban League Patch Center  
 The Wesley House Association  
 West Central Church of Christ  
 Wilhelmina Hardin Food Pantry  
 Women's Safe House  
 Word of Life  
 Zion Lutheran Food Pantry  
 Zion Temple Food Pantry  
 Zion Travelers Community Involvement Association  
 Zion United Church of Christ

# Our Programs

## Build Nutrition IQ



### Community Nutrition

The Community Nutrition department operates individual and group-level interventions within community settings, creating changes in knowledge, attitudes, behavior and health outcomes in individuals, families and small, targeted groups.

Nutrition education services, which are a part of this effort, are offered to our Community Food Partner Agencies free of charge. Services include on-site cooking demonstrations, recipe sampling, nutrition lessons and nutrition education materials. All educational services are aligned with the food being distributed by pantries, churches, soup kitchens and shelters.



### Operation CHEF

Operation CHEF (Culinary Habits to Empower Families) is a nutrition-focused cooking course that teaches kids, teens, adults and families at risk of hunger fundamental culinary skills through hands-on lessons. Because low-income individuals and families frequently prepare meals at home, strategies to help them prepare nutritious home-cooked meals are critical in the fight to end childhood hunger.

With nutrition education woven into every recipe, discussion and activity, the program presents good nutrition as fun, accessible and delicious. Our team promotes discussion and sharing in these classes, so participants learn from each other and enjoy a positive experience.



*"We give your nutrition education information to our volunteers to share with the guests. They have found the information is then spreading by word of mouth throughout the community. One person who does not come to the pantry asked a volunteer for the chicken tetrazzini recipe because the person had heard it was so good!"*

*—Bond County Food Pantry*



## Virtual Classes

OFS uses videos as well as Facebook Live and other virtual platforms to connect directly with individuals and families. From the comfort of their home kitchens, participants practice culinary skills alongside an instructor in an interactive class. Quick-tip videos provide basic and advanced information at the pace of each viewer. These virtual cooking classes — as well as grocery store tours, cooking demonstrations and nutrition presentations — teach participants to cook delicious, nutrient-rich food on a budget in a direct-to-consumer format.



## Workplace Wellness

Americans working full time spend, on average, more than one-third of the day, five days a week, at their workplaces. Effective workplace-based programs and policies can reduce health risks and improve quality of life. Toward this goal, we collaborate closely with each organization to create a personalized approach to combat their employees' specific health-related disparities.

# Our Programs

Champion Change

## FRESH

**Food Is Medicine**

Our innovative programs treat food as medicine and are designed to improve the overall health of individuals and communities.

### Fresh Rx: Nourishing Healthy Starts

Food-insecure mothers have greater risk of chronic conditions and complications during pregnancy, and their infants are more likely to be born early and underweight. In addition, the delivery for an underweight newborn costs \$44,000 more, on average, than the delivery for a healthy-weight newborn.

After a successful pilot phase, we're partnering with local health care providers, as well as the Social Policy Institute at Washington University in St. Louis, to conduct a randomized control trial of 750 families over three years to determine the impact of the Fresh Rx program on food security and birth outcomes for Missouri women who are Medicaid beneficiaries.

Following screening for food insecurity by the managed care companies administering the Medicaid program, OFS provides half of the families with a weekly delivery of ingredients to make three nutritious family meals, as well as cooking classes, nutrition resources and supportive services. The other half receive food and nutrition resources only.

Claims data for the two study groups will be compared with data for nonparticipants and the findings provided to policymakers to help them make informed decisions about the value of addressing food insecurity as a reimbursable health-care expense under the Medicaid program.



### Fresh Rx: Prescribing Healthy Futures

This year, OFS began a partnership with the Division of Endocrinology and Diabetes at St. Louis Children's Hospital to conduct a pilot program serving 30 young people with a diagnosis of type 1 diabetes. Participants and their families will receive a weekly meal kit delivery, regular consultations with a registered dietitian and supportive services from a care manager. The goal of the program is to improve management of symptoms, lower hemoglobin A1C levels and decrease episodes of diabetic ketoacidosis.



## Policy & Advocacy

OFS advocates for policies that address the underlying causes of hunger and strengthen individuals and families in Missouri. Our goal is to create a robust and equitable health and food safety net system that increases opportunities for all Missourians to put food on the table and live healthier lives. The 2021 Missouri legislative session brought several victories for food and nutrition policy. Our team supported five bills that passed session, including legislation creating a Statewide Food Security Task Force.

Our advocacy work includes training and support for Momvocates, champions for health and nutrition safety net programs who began their work in 2021 with storytelling training. The goal is to use their voices to increase understanding of food insecurity and advocate for policies that improve health and food access.



## School Breakfast

When children eat breakfast, they perform better on tests, experience improved memory and concentration, achieve stronger attendance records and visit the school nurse less often.

With support from the Food Research and Action Center, OFS is working to increase breakfast participation across the state and to showcase innovative approaches and best practices. For example, Breakfast After the Bell models improve traditional school breakfast by changing the location and time. Rather than being offered in the cafeteria before school starts, breakfast is moved into classrooms, where students are more likely to have the opportunity to eat, or onto convenient kiosks where students can easily access grab-and-go meals. OFS provides resources, information and technical assistance to ensure every student has the chance to eat a nutritious breakfast at school each morning. Learn more at [MoSchoolBreakfast.org](https://MoSchoolBreakfast.org).



## WIC Innovation

The Special Supplemental Nutrition Program for Women, Infants and Children (WIC) is a federal public health program that provides food assistance, nutrition education, breastfeeding support and health-care referrals for pregnant women, new mothers and infants, and children up to age 5. Research shows that access to nutrition during pregnancy and in the first few years of life has long-term impacts on health. OFS is working to increase participation among eligible Missourians by conducting a multiyear research study designed to identify pain points from each stakeholder that impede WIC satisfaction and utilization. We are learning from WIC participants, retailers and providers to develop innovative solutions and create a program that works better for everyone involved.

# Our Events

Oct. 1, 2020 - Sept. 30, 2021

## Friends Board Events

The OFS Friends Board organized two virtual events in place of its annual Party for Packs. These dynamic, delicious and interactive evenings were attended by nearly 200 people and raised a total of over \$51,000 combined. Proceeds benefited OFS's Operation Backpack program, which distributes sacks of kid-friendly, shelf-stable food each week to get students through the weekend, when school meals are unavailable.

### Event Committee

Shelby Akos	Rica Hendrix
Clayton Bax	Katie Holtgrave
Sean Berry	Katie Mueller
Alyssa Burks	Alex Rich
Tess Coyman	Amanda Ruby
Kelly Cubellis	Chris Sawicki
Barrett Feltmeier	Austin Schultz
Julie Feltmeier	Cole Silverman
Brittany Forrest	Mitch Slattery
Madeleine Garbo	Mark Taylor
Suzanne Hart	Scott Whitehill
Katie Hebson	



## Pasta for Packs

Oct. 12, 2020

Our virtual cooking event with James Beard Award-winning chef Gerard Craft was a huge success. Chef Craft guided beginners and foodies alike through the preparation of a salad and fresh pasta dish with meal kits curated by his Clayton restaurant, Pastaria. This fun, interactive evening was a dynamic and delicious event for all ages, and more than \$21,000 was raised to support Operation Backpack.

## Sponsors

Ernst & Young \$2,500  
UMB Bank \$2,500  
McCarthy, Leonard & Kaemmerer L.C. \$1,000

Edward Jones \$500  
Peoples National Bank \$400  
Ralph & Lee Anne Quatrano \$400





## Operation BBQ

May 13, 2021

In this virtual cooking event with Sugarfire Smoke House's award-winning Executive Chef Matt Glickert, at-home participants were guided through the preparation of a full meal, including kabobs, lemon herb coleslaw and potato salad. Attendees preordered kits of ingredients paired with 4 Hands Brewing's City Wide beer. This event raised more than \$30,000 for Operation Backpack.

## Sponsors

Ernst & Young \$2,500

AIG \$2,000

McCarthy, Leonard &  
Kaemmerer L.C. \$1,000

Peoples National Bank \$400

TSI Global Companies LLC \$400



# Our Events

Oct. 1, 2020 - Sept. 30, 2021

## Swing to Heal Hunger Golf Tournament

Oct. 5, 2020

OFS welcomed 115 golfers to WingHaven Country Club for our 27th annual Swing to Heal Hunger golf tournament. The outing raised more than \$77,000 to support OFS's work.

Lunch was donated by Russo's, and dinner was prepared by students in St. Louis Community College's hospitality studies program.

### Sponsors

#### Title (\$20,000)

Ascension

#### Champion (\$10,000)

Seeger Toyota

#### Eagle (\$5,000)

Becker Iron & Metal

#### Birdie (\$2,500)

Core Telecom  
Straub's Market  
Toyota Financial Services  
Quiet Village Landscaping

#### Major In-Kind

Molson Coors  
Russo's Catering  
St. Louis Community College

#### Invitational (\$1,700)

CJC Transport  
Dema  
Terry and Barb Donahue  
Gabriel Group  
Greensfelder  
SoTel System Inc.  
Vistage

#### Hole (\$500)

Gadellnet  
Great Southern Bank  
Kurt and Julie Hoff  
Jan-Pro  
Mike and Kate Kupstas  
Vogel Heating



### Event Committee

Roger Bailey\*  
Clayton Bax  
Alejandra Berra  
Jim Goebel  
Art Kerckhoff  
Brian Nale  
Andy Seeger  
Steve Spratt



\*We are grateful for the enduring friendship and support of the late Roger Bailey. He will be greatly missed.

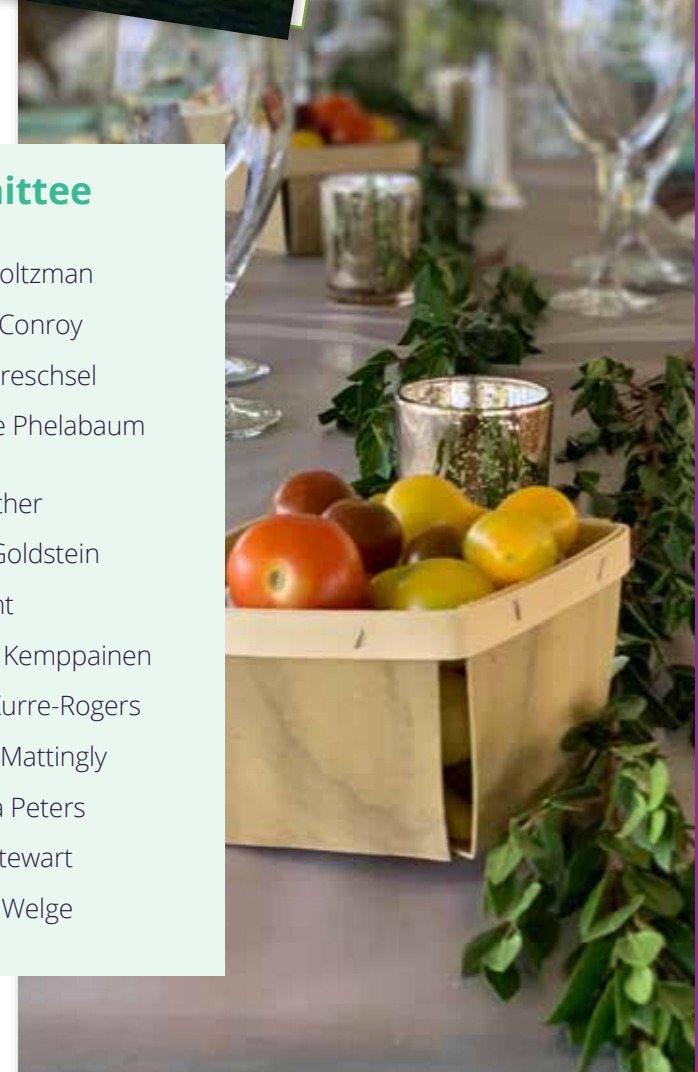


## Feast for Change

Inaugural Event: Sept. 11, 2021

Our inaugural Feast for Change farm-to-fork experience marked our 40th anniversary and raised over \$90,000 in support of our future work. The evening highlighted significant moments in OFS's history, starting with our founding in 1981 as a food rescue organization.

The evening paid special tribute to Mike and Kate Kupstas, the inaugural Champion for Change Award honorees. Mike, CEO of Lion's Choice, served on the OFS board from 2003 to 2018 and has been instrumental in helping OFS grow through business connections, food donations and leadership development. Kate is a longtime supporter and leader of a group of Operation Backpack volunteers.



### Event Committee

Amy Boltzman  
Claire Conroy  
Katy Dreschsel  
Denise Phelabaum Evans  
Jill Gaither  
Traci Goldstein  
Jill Hunt  
Susan Kemppainen  
Gina Kurre-Rogers  
JoAnn Mattingly  
Marcia Peters  
Kate Stewart  
Sheila Welge

### Sponsors

#### Urban Farm (\$10,000)

Mike and Kate Kupstas

#### Farmer's Market (\$5,000)

Bryan Cave Leighton Paisner LLP  
Warehouse of Fixtures

#### Community Garden (\$2,500)

Ascension  
Fifth Third Bank  
Louis H. Kohler Foundation  
Elaine Moss  
National Cart Company  
Ole Tyme Produce  
PNC Bank  
Post Holdings Inc.  
Tech Electronics  
Volpi

#### Bee Keepers (\$1,000)

Amy Amelung  
Chris Burrige  
Craig Evans and Denise Phelabaum Evans  
Luxco  
Musick Construction  
Peoples National Bank  
Skip and Elaine Spielberg

#### Major In-Kind

Rockwell Beer Company  
Unshackled

# Our Volunteers

## Volunteers Are Critical to Our Mission

Halfway through the fiscal year, we were able to welcome a limited number of volunteers back to the warehouse to help sort food, pack family meal kits and prepare backpacks for distribution.

In addition, our volunteers worked tirelessly to provide food and essential supplies to others by helping at gleaning events, Shop Out Hunger, Summer Meal distributions and much more!

**3,611** volunteers  
devoted **76,743** hours,  
saving OFS **\$2.19 million**  
during the fiscal year.

### Volunteer Groups

Bryan Cave Leighton Paisner LLP

Enterprise Holdings Inc.

GiftAMeal

The Home Loan Expert

Humana

KARES Camp

Leigh Consulting

Marsh & McLennan Agency

Maryville University

Musick Construction

Novus International

Olin Corporation

Panera

Safety National

Saint Louis University  
School of Medicine

Schnuck Markets

Villa Duchesne and Oak Hill School

Washington University School of Law

World Wide Technology





# Our Community Food Drives

**Food and Fund Drives raised more than \$1 million in food and monetary donations.**

These volunteer-led efforts are crucial to our ability to get food to individuals and families in our service area.

## Leadership Food Drives\*

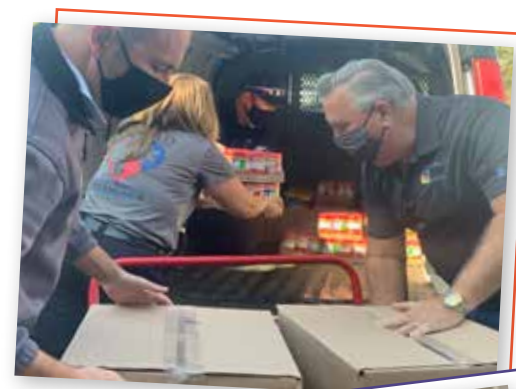
Edward Jones  
The Harvard Club of St. Louis  
Ladue School District  
Missouri Democratic Party  
Randall's Wine & Spirits  
Six Flags St. Louis  
St. Charles County Ambulance District  
St. Louis B-Works Cranksgiving Event  
Whitfield School  
Woodard Cleaning & Restoration

## Leadership Fund Drives\*\*

105.7 The Point  
Bayer  
The Dave Glover Show 97.1 FM  
ELCO Chevrolet Cadillac  
Enterprise Holdings Inc.  
Federal Reserve Bank of St. Louis  
GM Financial  
Masonmade Stone Design + Supply  
McCarthy Holdings, Inc.  
Millipore Sigma  
Mosby Building Arts  
Object Computing Inc.  
RGA Reinsurance Company  
True Refrigeration  
Washington University School of Medicine

\*More than 4,000 pounds of food donated

\*\*More than \$5,000 donated



# Our Partnerships

## Dedicated Partners Empower Our Work

OFS collaborates with a broad range of organizations and entities to fulfill our mission. We are grateful for the resources, expertise and support they provide.

### Partners

Area Resources for Community and Human Services (ARCHS)  
Bayer YMCA  
Becker Iron and Metal  
Beyond Housing  
Boggs, Avellino, Lach & Boggs LLC  
Bryan Cave Leighton Paisner LLC  
Center for Youth on the Rise  
Christian Hospital  
City of Ferguson Parks and Recreation  
City of Wellston  
Eckert's Family Farms  
Equity Homes  
First Things First Foundation  
Girl Scouts of Eastern Missouri  
Greater Grace Church  
Greater St. Louis Area Council  
Boy Scouts of America

Home Sweet Home  
International Institute  
The Kaufman Fund  
Liberty Apple Orchard  
Lion's Choice  
The Little Bit Foundation  
Mehlville School District  
My Diversity Circle  
NAACP  
OB Care Center at SSM Health DePaul Hospital  
People's Health Centers  
Phoenix Solutions  
Share Our Strength  
Share the Harvest  
Social Policy Institute at Washington University in St. Louis

SoTel Systems Inc.  
SSM Health DePaul Hospital  
SSM Healthcare  
St. Louis Area Diaper Bank  
St. Louis Area Foodbank  
St. Charles City-County Library  
St. Louis Children's Hospital  
St. Louis County Division of Youth Services  
St. Louis County Library  
St. Louis Public Library  
Sunset Transportation  
That's So Good LLC  
Three Rivers Community Farm  
United for Children  
University of Missouri Extension  
Urban League of Metropolitan St. Louis  
Warehouse of Fixtures



# Our Partnerships

## Innovative Collaborations

*"Repurpose for a Purpose is one of the most incredible projects I have worked on in my career. Instead of this furniture ending up in a landfill, it was repurposed to help feed those in need!"*

—Bonnie S. Wedel, Bryan Cave Leighton Paisner LLP



### Repurpose for a Purpose

Through this program, businesses can dispose of assets and materials while generating revenue to support OFS's hunger relief work. The program began in 2008, when OFS board member Skip Spielberg collaborated with Bonnie Wedel, facilities manager at Bryan Cave Leighton Paisner LLP, to arrange for out-of-use furniture to be repurposed in order to benefit OFS.

#### How It Works

OFS connects businesses to our trusted partners, who are committed to philanthropy and social responsibility. They help businesses dispose of unwanted equipment and furniture, creating a donation that literally puts food on the table for food-insecure families in the region.



### Healthy Eating Resources

This video library was created through a partnership between SSM Health DePaul Hospital and Operation Food Search. The series shares information about healthy food choices with people who may be food insecure, are working to make healthy choices on a budget, or are interested in improving health through diet.

The eighteen videos cover topics such as Meal Planning Basics, Hidden Vegetables and Shopping for Produce. They can be viewed on our website at [OperationFoodSearch.org/healthy-eating-resources](https://OperationFoodSearch.org/healthy-eating-resources).

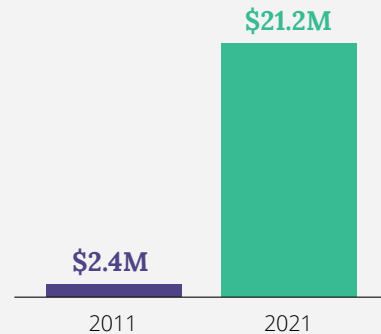
# Our Financials

FY 2021

## TEN-YEAR GROWTH

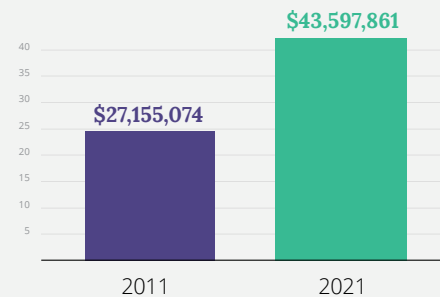
### Total Assets

Nearly **9 times** larger in 10 years.



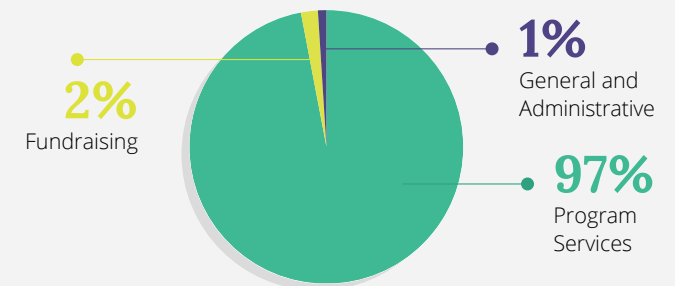
### Total Revenue

Increased by **61%** in 10 years



## FISCAL YEAR 2021

### Expense Allocation



## ASSETS

### Current assets:

Cash and cash equivalents	\$ 2,682,556
Investments	3,739,260
Receivables and promises to give	1,046,056
Inventory	1,644,345
Prepaid expenses	44,540

### Total current assets

Property and equipment, net of accumulated depreciation	5,113,525
Unconditional promises to give, net of discounts	73,639
Grants receivable, net of discounts	173,149
Endowment	6,675,106

### Total assets

2021
<b>\$ 21,192,176</b>

## LIABILITIES AND NET ASSETS

### Current liabilities:

Accrued expenses	\$ 333,518
------------------	------------

### Net assets:

Without donor restrictions	16,751,654
With donor restrictions	4,107,004
<b>Total net assets</b>	<b>20,858,658</b>

<b>Total liabilities and net assets</b>	<b>\$ 21,192,176</b>
---	----------------------



# Our Financials

## FY 2021

OVERVIEW			
	2021		
	Without Donor Restrictions	With Donor Restrictions	Total
Support and other revenue:			
Support:			
Cash and investment contributions	\$ 6,915,790	\$ 1,097,139	\$ 8,012,929
State support	2,427,146	-	2,427,146
Grant revenue	3,966,543	718,646	4,685,189
Special events (net after \$62,009 of expenses)	172,260	-	172,260
Subtotal	13,481,739	1,815,785	15,297,524
Other non-cash contributions	27,285,781	-	27,285,781
Total support	40,767,520	1,815,785	42,583,305
Other revenue (loss):			
Investment income	628,029	264,685	892,714
Rental income	2,430	-	2,430
Other income	119,412	-	119,412
<b>Total support and other revenue</b>	<b>\$ 41,517,391</b>	<b>\$ 2,080,470</b>	<b>\$ 43,597,861</b>
Net assets released from restrictions	1,110,583	(1,110,583)	-
Functional expenses:			
Program services	36,972,408	-	36,972,408
Management and general	334,645	-	334,645
Fundraising	809,354	-	809,354
Total functional expenses	38,116,407	-	38,116,407
Changes in net assets	4,511,567	969,887	5,481,454
Net assets, beginning of the year	12,240,087	3,137,117	15,377,204
<b>Net assets, end of the year</b>	<b>\$ 16,751,654</b>	<b>\$ 4,107,004</b>	<b>\$ 20,858,658</b>

The COVID-19 worldwide pandemic continued to impact the Organization. Stimulus bills provided extra support that helped fund additional food needed in the community. However, supply chain issues continued, food donations were disrupted and the demand for food assistance remained high. The Organization continued to adapt to limit transmission of the disease by following food distribution models that included more drive-through and grab-and-go options, adjusting warehouse procedures to include additional safety measures, continuing to provide numerous virtual and online resources for community nutrition, food access and other assistance, and partnering with additional organizations to provide leadership and support for hundreds of thousands of individuals in the bi-state region.

# Our Donors

Oct. 1, 2020 - Sept. 30, 2021

## Major In-Kind Donations

### \$1,000,000+

Dierbergs Markets	Hope and Encouragement for Humanity	Schnuck Markets
----------------------	--	--------------------

### \$500,000—\$999,999

Central Paper Stock	Keefe Supply
Good360	US Foods

### \$100,000—\$499,000

Clark Logistic Services	Little Caesars Pizza
Dynamic Vending	Pepperidge Farm
Feed the Children	St. Louis Cold Storage
Girl Scouts of Eastern Missouri	Straub's Fine Grocers
Gate Gourmet	Sysco Food Services
Global Trucking	Whole Foods

## Cash Donations

### \$1,000,000+

Anonymous	St. Louis County
-----------	------------------

### \$250,000—\$999,999

Anonymous	Bayer Fund
-----------	------------

### \$100,000—\$249,999

Anonymous	Missouri Foundation for Health
Community Impact Network	State of Missouri

### \$50,000—\$99,999

Ameristar Casino St. Charles	MAZON
Anonymous	Estate of Jeanne McCormack
Miriam Ferguson	James and Susan McHugh
Estate of Rosemary Hoehn	Post Holdings
LBE Holdings LLC, DBA Hardee's	Sunnen Foundation
	United Way of Greater St. Louis

### \$25,000—\$49,999

American Direct Marketing Resources Inc.	Jefferson Foundation
Anonymous	Dennis and Rebecca Muilenburg
Bank of America Charitable Foundation	Melitta S. and Joan M. Pick Charitable Trust
Becker Iron and Metal	Herman T. and Phenie R. Pott Foundation
Christian Hospital	RGA Reinsurance Company
Dickler Family Charity Remainder Trust	Louis Russo
ELCO Chevrolet Cadillac	Share Our Strength
Enterprise Holdings Foundation	SSM Health
Estate of John Everding	University of Missouri
	Linda and Pete Werner

## Our Donors Make All Our Work Possible

### \$10,000–\$24,999

Anheuser-Busch Foundation  
Anonymous (4)  
Ascension Health  
Robert Bassett and  
Vicki Pohlman  
The Boeing Company  
Boy Scouts of America,  
Greater St. Louis Area Council  
Andy and Donna Bresler  
Bunge North America  
Foundation  
Dan and Amye Carrigan  
J & S Cochran  
Deaconess Foundation  
Deutsch Family Wine  
and Spirits  
Dierbergs Markets Inc.  
Mary Ann East  
Edward Jones  
Emerson Automation  
Solutions  
Steve and Mary Frank  
FRB Federal Credit Union  
GiftAMEal  
Joseph and Nancy Giljum

Give Back Brands Foundation  
Stephen and Rebecca Hager  
Jay Henges Charitable Trust  
Husmann Corporation  
Interco Charitable Trust  
Marie Jacobs  
Mary Junck and Ralph Gibson  
Mike and Kate Kupstas  
Gene Maier and Catherine  
Ingini-Maier  
Andrew and Stephanie  
Martin  
MasterCard International  
Sharon Moran  
Murphy Company Inc.  
Anita and John O'Connell  
Family  
Ralph and Mary Pelikan  
Protiviti  
Qualified Benefits  
Consultants Inc. / Ekon  
Benefits  
Rodger and Paula Riney  
David and Kyra Robinov  
Timothy and Mary Beth

Rodgers  
Jeffrey and Sharon Rosenblum  
Rabbi Elliot D. and Nancy S.  
Rosenstock  
Erin and Jim Runnels  
Stephanie Schnuck  
Mary Schoolman  
Shirley Sher  
Spoehrer Family Charitable  
Trust  
John D. Sprague and  
Carol W. Kohfeld  
Square One Foundation  
St. Louis Claim Managers'  
Council  
St. Louis Jefferson Solid Waste  
Management  
St. Louis Women's Creative LLC  
Stern Brothers & Co. / Pepe  
and Terry Finn  
Stout Industries Charitable  
Foundation  
Norman J. Stupp Foundation -  
Commerce Bank, Trustee  
Trip and Terri Straub  
Tjootjim Foundation

Trio Foundation of St. Louis  
Jane Tschudy  
Raymond and Laurie  
Van de Riet Jr.  
Warehouse of Fixtures  
Stephannie White  
William A. Straub Inc.

*"\$82 of this donation is from  
my daughter, Abby, age 10.  
She raised the money by  
cooking baked goods and  
selling them to neighbors."*

*She called her little business  
'Abby's Quarantreats' and  
wanted all of the money to go  
to Operation Food Search."*

*—St. Louis area mom  
and OFS supporter*

# Our Donors

Oct. 1, 2020 - Sept. 30, 2021

## \$5,000–\$9,999

Diane Allen  
American Family Insurance  
Dreams Foundation  
Anonymous  
Janine and Newell Baker  
Nancy Bales  
Carmen and Martin Blaylock  
Leslie Bloom and Tom Mueller  
Lee Broughton and Chrissy Taylor  
Kathleen and David Brunts  
Bryan Cave Leighton Paisner LLP  
David and Susan Burkhart  
Capital City Fruit Co. Inc.  
W. Lee and Katie Capps  
Eric Christner and Kim Dunbar  
William and Trina Cotner  
Charles Cuny and Virginia Vasey  
Linda Dill  
Terry and Barb Donohue  
Edison Family Foundation  
Enterprise Holdings Inc. - IT  
Department  
ESCO Technologies Foundation  
ESCO Technologies Inc.  
Ryan Eudy  
David and Kathleen Fischhoff  
Francis Coppola Winery LLC  
G & R Farms

Fritz and M.M. Gebhard  
Mary Ellen Gipson Fellowship  
Neal Harwood  
Allen and JoAnn Hauge  
Patrick and Gina Howley  
Kay Johnson  
Robert Johnson  
John and Anne Jordan  
Chris and Jessica Kerckhoff  
Martha Reitz Kratzer  
Susan Latorre  
Clemence S. Lieber Foundation Inc.  
Paul and Laverne Lorenzini  
Andrew Maynard  
McCarthy Holdings Inc.  
James Moranville and  
Jane Hanebrink  
Lynn Morley  
Robert Morley Jr.  
Mosby Building Arts  
Toni Murphy  
National Cart Company  
Object Computing Inc.  
John and Valerie Paci  
Lisa and Dan Pelikan  
David and Julianne Pernikoff  
James and Robin Pettijohn

PNC Foundation  
Ruth M. Powell  
RIBUS Inc.  
Saigh Foundation  
Schmidt and Barton Family Fund  
Seeger Toyota  
Janice Seele  
Clay and Janice Semenkovich  
Neal and Linda Shapiro  
Karen C. Smith  
Skip and Elaine Spielberg  
Square Inc.  
Thomas and Karen Stern  
St. Louis Auto Dealers Charitable  
Foundation  
The St. Louis Trust Company  
Students 4 STL  
Everett and Geneva Sugarbaker  
Foundation  
Tim and Mary Sullivan  
William S. and Blair Y. Thompson  
Family Foundation  
George and Kathleen Timpe  
Simon and Mary Tonkin  
Toyota Dealer Match Program  
Tracy Family Foundation  
The Tromblee Foundation

Anthony and Mary Trupiano  
Vi-Jon  
Webster Groves Presbyterian  
Church  
John and Sheila Welge  
Wells Fargo Advisors  
Frances White  
Frederick Wiesehan

*"You don't know how much this helps. Our family took in a child whose parents both died six months ago, and due to the virus we haven't been able to get any paperwork done. We didn't have a lot of extra money before, but with another mouth to feed it has been really difficult. This food helps so much."*

*—Recipient of food at  
St. Louis County Library  
drive-through distribution*



## Our Donors Make All Our Work Possible

### \$2,500–\$4,999

AbbVie	Peter and Jane Conrad	Gregory Heille	Nancy Mietzner
Frank Adam Foundation	Continental Title Company	Florence Heiman Charitable Trust	Janet Miller
Timothy Adams	David and Jean Cowell	HERA Charitable Fund	Roger and Melissa Miller
Aero Charter	Kathryn Cox	Harlan Hodges	Millipore Sigma
Steve Akos	Lois Crampton	Julie Hupperts	William Moench Jr. and Pamela
Grace Allen	Lisa Crissman	Jägermeister	Stephans Moench
Brad Anderson	Curium US LLC	Nanette Johnson	Robert and Mary Morgan
George and Brenda Anderson	Matthew and Rose Deffenbaugh	Kansas City Toyota Dealers	Elaine Moss
William and Wendy Anderson	Dentons	Association	Jeff Mueller
Anonymous	James and Nancy Donnell	David Katz	Joan Mueth
Cathy Barancik	E & J Gallo Winery	Karl and Karen Kloster	NUSO
Ted and Susan Barr	Eckert's Country Store	Robert and Caralmae Knickmeyer	Kenneth Obrecht
Richard and Kathleen Becker	Employees Community Fund of	Louis H. Kohler Foundation	Elizabeth Ortinau
William Becker	Boeing	Christine and Jon Krueger	Mary Porbeck
Bryan Bell	Equifax Workforce Solutions	Ladue Garden Club	Emily Pulitzer
Juan Bertolino	ERB Equipment Company	Mont and Karen Levy	Paul Rancuret
Beyond Housing	Erler Charitable Fund	Robert J. Lieber Charitable Trust	Willis and Rosemarie Ranney
Blackhawk Network	Ernst & Young LLP	Lions Club International	John and Olivia Rasp
Neal and Susan Bockwoldt	Anna Etzkorn	Paul and Connie Lombard	Jeffrey and Ann Rayfield
Raymond and Dorothea Botz	Craig Evans and Denise	William Loyd and Nancy Rogers	Regional Business Council
Michele Bourdeau	Phelabaum Evans	Bonnie Manion	Reitz & Jens Inc.
Vance and Genelle Brakefield	Bernard and Marjorie Feldman	James and Katherine Martin	Michael Renfro
Erin Brooks and Josh Udelhofen	First Bank	Joanna May	Rachel Roberts
Phil and Judy Cagney	Nancy Friedland	Philip and Jeanne McDermott	Henry Robertson
William and Janet Campbell	Randell and Maureen Gelzer	Emily McDonnell	Roeslein and Associates Inc.
Campbell-Avery Fund	Kenneth and Kathleen Graesser	William and Dyann Menzel	Michael and Judy Ruffus
Cigna Matching Gifts	Great Southern Bank	The Meyer Family Fund of InFaith	Jennifer Sakurai
Commerce Bank	Nancy Grove	Community Foundation	John and Betsy Samet
	August Hattrich	Midland States Bank	

# Our Donors

Oct. 1, 2020 - Sept. 30, 2021

## \$2,500–\$4,999 (continued)

Sander Foundation  
Willem and Jenifer Schilpzand  
Christopher Schimweg  
Amanda Schoonmaker  
Helen Schrader  
Alan and Judy Schultz  
Mark and Anna Sears  
SFW Partners LLC  
L. David Sibley and Wandy Beatty  
Nancy Siteman

William and Darlene Skaggs  
Todd and Laura Smith  
Spectra Painting Company  
Mary Ann Srenco  
Roseann St. John  
Louis R. Stark  
Joan M. Stepzinski  
Laura Stewart  
Karen A. Strobach  
Summit Distributing

Tech Electronics Inc.  
Irene Thalden  
Toyota Financial Services  
UMB Bank  
Union Avenue Christian Church  
United HealthCare Services Inc.  
Connie Van Fleet  
Volpi Foods  
Wahl Family Gift Fund  
Cynthia Walker

Washington University  
in St. Louis  
Jerry J. Wilson Memorial  
Foundation  
Window Nation LLC  
Patricia Woodward  
James Workman  
World Wide Technology

## \$1,000–\$2,499

9 Mile Garden  
Elliot Abbey  
Paul and Donna Abrams  
Richard and Stephanie  
Ackerman  
Kelvin and Karen Adams  
Joe Adorjan  
AIG  
David and Maureen Albrecht  
Allen-Birge Charitable Trust  
Amy Altholz  
Amy Amelung  
Lori Anderson  
Richard Andren

Opal Andrews  
Anonymous  
Karen Armour  
Charles Armstrong  
Bruce Arnold  
Jane Arnold  
Kristina Arnzen  
Norman and Marie Atkins  
Charitable Trust  
Mary Austin  
Jay Aylsworth  
Elicia Bailey  
Richard and Iona Baldwin  
Diane Balogh

Ann Barfield  
Barks Family Foundation  
Blake and Jane Bastien  
Thomas Bauer  
Greg and Melissa Baumann  
Mary Baumann  
Gerard & Terry Bava  
Erin Beal  
Michael and Sandy Becker  
Robert and Kathryn Becker  
Judy Beckwith and  
Justin Mauzy  
Gregory Bedell  
Pamela Belloli

Carol and Rick Bender  
John and Patricia Bender  
Toby Benis  
Debbie Bennett  
Cary and Dede Berg  
John and Christine Berg  
Daniel Bergmann and  
Debra Dill-Bergmann  
Karen Bergmann  
Claude Bernard  
Sam Bertolet and Helen Ziercher  
William and Nancy Besemer  
Suzanne Besnia and  
Victor Richey

Joyce Best  
Patricia Bieg  
Dolores Bieger  
Mark Bierk and Stacey Stater  
James Biggs  
Catherine Bishop  
Blacks Ridge  
Robert and Mary Jo Blankemeyer  
Bliss Charitable Trust  
Deborah Bloom and  
Christopher Carson  
Barbara Bluestone  
Michael Boelter  
Louis and Mary Bonacorsi

## Our Donors Make All Our Work Possible

### \$1,000–\$2,499 (continued)

Kimberly Bonin	Carmel Calsyn	Crestwood-Sunset Hills	Mary Dinauer	Fischer-Bauer-Knirps
Arthur and Alison Bourey	William and Kathleen Carmody	Rotary Club	Kenya Ditto	Foundation
Jay Bowman-Kirigin	Teri Carrington	Judy Crews	Rick Dopuch	Charles Fisher
David Bradshaw	Dorothy Carroll	Ryan and Cynthia Cuba	Scott Durden	Norman Fishman
David and Andrea Braun	Catholic Charities	Dairy Farmers of America	Patricia Duvall	Susan FitzGibbon
Michael Brave	Gil and Erin Cattoor	Cares Foundation	Matthew and Sue Easley	Julie Flory
Nancy Breier	Linda Cerutti	Mackenzie Daly	Mark Eggert and Julie Tang	Rachel Foster
Gina Bremehr	Raghavan and Sumitra	Michael and Marcia Daniels	EIBS LLC	Roger and Carole Foster
William and Ann Brenner	Chakraverty	Danna McKittrick, P.C.	Marion and Seth Eisen	Zach and Janie Foster
John and Laura Brink	Kelly Childs	Ronald and Patricia Danzer	Kathleen and Steve Eiser	Judith Fox
Margaret Brockmann	Chod Family Foundation	Mike and Sue Darcy	Ryan and Laura Ellen	Franciscan Sisters of Mary
Robert Broderick	Kathleen Chott	Thomas and Barbara Daugherty	Mary Enterman	Karen Freeman
Clayton C. Brown Family	Paul and Susan Christopher	Michael and Brenda David	Alejandro Espinosa	Kathryn Freese
Foundation	Church World Service Inc.	Sonya Davis	Evans Production	Mark French
David Brown and Cheryl Green	Michelle Clark	Grace Day	Engineering Co.	DeLaurian Viviano Friedman
Morton and Barbara Brown Jr.	Rubbie Clay	Theodore and Deborah Dearing	Helen Evers	Kirk and Alice Fritsch
Dr. Jane Brownstone	Kyle Coady	Charles Debord	Glenn and Dianne Ewing	Walker Gaffney
Melanie Bryan	Christine Cocayne	Jerome S. DeClue	The Exponential Group LLC	Jill and Brett Gaither
Laura Bryant	Lois Coder	Jeffrey and Susan Dee	David and Lelia Farr	Charles and Lori Gallagher
Lee Bryant	David Cole	William and Marjorie Deemer	Federal Bar Association	David B. and Alice W. Galt
Nik and Gina Brym	Jennifer R. Cole	Janet Deetz	Tricia Feibig	Georgene Gann
Buckner Family Charitable	Ryan Colvin	Dell Technologies	Angela Felton	Diane M. Garea
Foundation	Michelle Conlon and	Ronald and Sue Dellbringge	Nancy Ferriss	Sarah Garwood
Angelo and Pamela Bufalino	Robert Thompson	DEMA Engineering Company	Brian and Michelle Fiedler	Gemini Wealth Group
Laurie Burch	Chris Connolly	Kristin Denbow	Fifth Third Bank	Christopher Georgen
Susan Burns	Dennis and Sharon Corcoran	Dale Dendtler	Richard and Dianna Fine	Thomas Gephardt
Burns McDonnell Foundation	Anthony and Leslie Corey	Cara Denney	Lance Finney	Edward J. Giganti
Chris and Matt Burridge	John and Tracy Corrao	Glenn Detrick	George Fiorini	Bridget Girdner
Stephen Burrows	Stephen P. Cortinovis	Jonathan and Jennifer Deutsch	First Congregational Church	Jonathan Giszczak
Donald Busiek	Gary and Jane Cox	Jeri Devereaux	of Webster Groves	Gina Glackin
Philip and Candace Cady	Brian and Judy Coyman	Donald and Nancy Diemer	Suzanne Fischer	Joel Glassman and
				Katherine Cochrane

# Our Donors

Oct. 1, 2020 - Sept. 30, 2021

## \$1,000–\$2,499 (continued)

Global Food Market	Dwight Hardin	David and Julie Hohman	Margaret Katranides	Warren and Susan Lammert
Michael Goldey	Michael and Debra Harres	Mark and Margaret Holly	Beth Kazlauskas	David Landau and Marybeth Pereira
P. Wayne and Jane B. Goode Foundation	Peggy and Larry Harris	Jim and Shirley Holten	Tom and Monica Keeline	Mary Lane
The Goodfellas Investment Fund, LLC	Elizabeth Harrison	Holy Redeemer School	Robert Keithley	Leanne Latuda
Elizabeth Goodman	Julie Hartell-Denardo	The Home Loan Expert	Miriam Keller	William Latz
Google Matching Gifts Program	Steven and Elizabeth Haupt	Ashley Hornsby	Barbara Kelley	John and Laura Laughlin
Abraham Gootzeit and Irene Holubec	Mary Hawker	Harold and Ethel Horowitz Family Foundation	Maura Kelly	Jenny Lauth and Jason Muelver
Michele and Mark Gorski	David and Kathy Hawkins	Luciann Hruza	Paul Kerkemeyer	Lawrence and Karen Lavin
Thomas Gow and Karen Witmer-Gow	Virginia Heagney and James P. Tobin	James and Phyllis Huettnner	Harold and Barbara Kiehl	Michael Lawson
John and Marian Gravlin	Janet Heath	Kayci Huff-Hardy	Sophi Kim	Jack and Debora Lay
Sandy Gray	J. Edwin Heathcock and Elizabeth Porter	Rosemarie Hughes and Kathleen Wolff	June King	Micki Le Sage
William and Nancy Gray	Kate Hebson	Susan K. Hume	Joe and Dawn Kinsella	Jake and Anna Leath
Lisa Greenberg	Rachel Hedgecorth	John and Kathy Hungerford	Katherine Kirby	Richard Lederich
Lisa Grimes	David and Jean Helm	Michael and Barbara Hurst	Christy Kisor-Leong	J. David and Susanne Leech
Larry and Angelynn Gross	Laurain Hendricks	Illinois Beef Association	Jerry and Gerry Klein	Melvyn Lefkowitz
Michael and Paula Gross	Genevieve Herman	Lisa Imbs	Ward and Carol Klein	Robert and Janet LeGrand
Gretchen Grote	The Herrfield-Redling Giving Fund	David and Roberta Imig	Richard Klohr	Mark Leifield and Lynn Rowan
John Gsell	Erik Herzog and Mary Barger	Intoximeters	Chris and Sandy Knight	Barbara Leitle and Paul Mounts
Thomas and Kathleen Gunn	Michael and Sallie Herzog	Janice Ittner	Christine and Thomas Knoten	Ned Lemkemeier
Karen Gupta	Joann Hetisimer	Richard Jackson	Michael Kohn	Antonio Leon
H & H Health Associates Inc.	Sharon Heuermann	Geralyn Jacob	Drew and Charli Kreienkamp	Greg and Alyson Levine
Ralph and Norma Jean Haag	Andy and Anita Higginbotham	Thomas and Emily James	Barry and Sherilyn Krell	Jeffery and Louise Levine
Dennis and Donna Hall	Virgil and Joan Hill	Mike and Kathy Jay	Brian and Ame Krippner	William Lewis
Bruce and Laura Halliday	Travis and Alison Hillen	Dean and Cheryl Joerling	Andrew and Sarah Krueger	Kevin and Karen Lickenbrock
William and Lois Hamrick	Tom and Jennifer Hillman	John and Pam Johnson	Daniel and Gloria Kweskin	Lighting Associates Inc.
Donald and Ann Hannon	Rich Hoenig	Ronald and Debra Johnson	Ladies Club of Brookdale - Creve Coeur	Diana Likely
Donald and Linda Hardin	Lesley Hoffarth	Sandra Johnson	Thomas and Noreen Laffey	Paula Limbaugh
		Cynthia Jones	Howard and Bonnie Laiderman	Casey Limmer
		Maryellen Judge	Richard and Judith Laitman	Daniel Linck
			Leonard Lammert	Linde Family Charitable Fund



## Our Donors Make All Our Work Possible

### \$1,000–\$2,499 (continued)

Lindell Development  
 Christopher J. Lingle  
 Keith and Erin Linnenbringer  
 David and Marilyn Lipman  
 Cherri Loehr  
 Samantha Long  
 Carmen Lubbert Fischer  
 Inna Lukashevsky  
 Luxco  
 Paul Macon  
 Mama Celeste and H Fund  
 Man Cave Meats  
 Kathy Manganaro  
 Amanda Mangold  
 Many Options Syndicate  
 Amy Maranto  
 Marian Foundation  
 Chuck and Jennifer Markwardt  
 Joette Martin  
 John E.S. Martin and  
 Kris Zapalac  
 Joann Mattingly  
 Catherine Matula  
 Elizabeth Maxeiner  
 Margie May  
 Darren Mayes  
 Marcia McCabe and John Raney  
 Kevin D. McCarthy  
 McCarthy, Leonard and  
 Kaemmerer LC  
 Jasmine McCormick

Jaimette McCulley  
 Tony and Joellen McDonald  
 Joan McGivney  
 William and Patricia McKelvy  
 Tom and Nancy McLaughlin  
 Doris McMahon  
 Valinda McPhee  
 John and Connie McPheeters  
 E. Jane Means-Hinton  
 Kristen Medlock  
 Medtronic  
 Members 1st Credit Union  
 Mark and Marsha Mertens  
 Lee and Barbara Meyer  
 Michael Meyer  
 Rich Meyers  
 Milton Mill  
 Virginia Miller  
 Mary Carol Millsap  
 Robert Millstone  
 Millstone Foundation  
 Joseph and Kathleen Mischik  
 Diane Mispagel  
 Missouri Beef Industry Council  
 Missouri Corn Merchandising  
 Council  
 Thomas and Cynthia Mitchell  
 Subhash and Manoharlata Mohan  
 Frederic Mohr  
 Doug Moise  
 Donna Moog

Robert Morgan  
 Harvey and Darlene Morris Jr.  
 James Mosblech  
 Jim Mosley  
 Mueller Prost LLC  
 Joseph Munshaw and  
 Colleen Hennessy  
 James and Nancy Murphy  
 Margaret Murphy  
 Musick Construction  
 Michael Nagle  
 Ram and Rashmi Nair  
 Mary Neal  
 Neeb Family Foundation  
 Nina Needleman  
 Alice Nelsen  
 George and Barb Nelson  
 Charles and JoAnn Nester  
 Debra Neustadt  
 Billy Newton  
 Timothy and Mary Ney  
 Ruth Nickerson  
 Kenneth Niemeyer and  
 Clare Wefelmeyer  
 Patrick Nolan  
 Susan Novack  
 James and Marcia Nusz  
 Trudy Oberbeck  
 Shawn and Julie Oberreiter  
 Susan H. O'Grady  
 Carol O'Hallaron

O'Hara Outdoors  
 Chuck Orban  
 Henry and Ilene Ordower  
 Ottolino Winters Huebner Inc.  
 Carrie Pace  
 Matt Padberg  
 Paese Family Foundation  
 Lawrence Page  
 Kathryn Palacio  
 Panera LLC  
 Kurt and Abby Pankau  
 Pantera's Pizza - O'Fallon  
 Paradowski Creative  
 Warren Patton  
 Pecha Family Foundation  
 Percheron Investment  
 Management  
 Raymond and Cynthia Peters  
 Robert W. Peterson  
 Deloris Petty  
 Jeff Pfankuch  
 Pfizer Foundation Matching  
 Gifts Program  
 Jane Pharis-Oliver  
 James Phelan  
 Guy and Kim Phillips  
 Piacentini Family  
 David Piston  
 Matthew Pitlyk  
 Pittsburgh Pipe  
 Julie Plax

Marshall and Sharon Podolsky  
 Anna and David Poger  
 Julie Porfirjeva and  
 Aaron Freidenberg  
 Colin Postlewaite and  
 Alleen Betzhauser  
 Mary and James Powers  
 Steve and Mary Pownall  
 Patricia Prager  
 Nathan Prange  
 Daniel Pribe  
 Kip Priesmeyer  
 Jennifer Pruehsner  
 Prufrock Foundation  
 Jeff and Sara Purple  
 Simon and Vickie Pursfull  
 Quiet Village Landscaping  
 Susan Rainer  
 Jane Rand  
 Steven and Alisa Range  
 Lioba Rao  
 Rao Family Charitable Account  
 Raymond James  
 Asim Razzaq and Luz  
 Robles Razzaq  
 Kristy Reed  
 Ellen Reed-Fox and Tim Fox  
 Jackie Relaford  
 Mia and Michael Rethorn  
 Michelle Reynolds  
 Margaret Rich

# Our Donors

Oct. 1, 2020 - Sept. 30, 2021

## \$1,000–\$2,499 (continued)

Richman Holdings LLC	Sunny Schaefer-Edwards	John Shelley	Margaret Storey	Church
Kathryn Richter	Clare Schallert	Diane Sher	Robert and Pamela Stover	U.S. Bank
Kenneth and Ruth Riney	Paul and Evangeline Schaper	Barbara and Ely Shrauner	Ryan Strong	Kellie Vahey
Jay and Lisa Ring	Stephanie Scherer	Jackson and Jennifer Sieber	Dawn Stroup	Nancy Van Dyke
Gregg and Ann Ripp	Jackie G. Schirn	Kenneth and Roselyn Simila	Dan and Suzanne Struempf	Vanguard Truck Center of St. Louis
Rivertree Community Church	Jeffrey and Sharon Schneider	William Sippo and Family	Stephen and Angela Strum	Shirley Vanhorenbeeck
Donald Rogers	Douglas Schmidt	Deborah Slagle	Laura Stuetzer	Vistage Worldwide Inc.
Peter and Susan Rogers	Schnarr's Hardware Company	Mary Slagle	Maria Suiter	Gary and Tina VonderHaar
Miranda Root	Paul Schnoebelen	Charles and Denice Smith	Margaret Sullivan	Amy Wachs
Marian B. Rosen and Jon Goldberg	Schnuck Markets	Gerald Smith	Walton and Carla Sumner	Elizabeth Wagner
Judy Rosenberger	Mary Ellen Schraeder	Phil Smith	S. Joshua and Victoria Swamidass	Richard Leo and Sandra Kay Wahl
Ross Family	Gilbert and Linda Schroeder	Thomas and Sandra Smith	Ieva Swanson	Steven and Melissa Wallach
Gretchen Ross	Nancy Schuehler-Harris and Jeff Harris	Snively Family Charity Fund	Jack and Betty Swanson	Mary Walsh
Stephen and Catherine Ross	Amy Schuster	Jeanne Snyder	James Tabor	J.R. and Mia Walters
Rouff Family Charitable Fund	Ken and Patricia Schutte	Agnes Sobel	Tabor Plastics Co.	Gerald and Jaculin Wankum
Sharon E. Rowe	Michael Schwartz and Clara Perry	Cory J. Spielberg	Richard David Taylor	Scot Ward
Amy Ruck	Allan and Susan Scott	Jennifer E. Sprague	Robert Thill	John and Pamela Warner
Emily Rumora	Fredna Scroggins	Steve and Tricia Spratt	Josh Thomas	Thomas and Holly Washeck
Sally Russell	Lyle and Bill Seddon	St. Clair County Farm Bureau	Jerome Thomasson	Richard and Suzanne Weaver
David Rutkowski	Jennifer Seeser	St. Louis Chapter Sior	Heather and Chris Thompson	Mark Weber
John and Leah Saguto	Deborah Seidel	St. Louis County Farm Bureau	Robert and Jan Thomure	Patricia Wedner
Jacqueline Saito and Paul Matz	Eric and Nancy Seiler	Saint Louis University	Jon Tiede	Ron and Ginny Weil
Lauren Sallwasser	Jonathan Serkes	J. Kent and Candy Stallings	Amber Tompkins	Carol Weisman
Barry and Dana Sandweiss	ServiceNow	Robert Standley	Josh and Marlene Toso	Peter Weiss
Frank Sandy	Jan Sessions	Robert and Sandra Stearns	Patrick and Jane Tracy	Karen and David Weller
Gary Sansone	Bruce Shapiro and Liz Guthrie	Patrick and Jessica Stephan	Truck Centers Inc.	Hal and Amanda Wellford
David and Jamie Sauerburger	Bruce Shapiro and Liz Guthrie	Rick and Malette Stevens	Dolores Tucker	Beverly Wells
Daryl Scales	Debra Shatoff	Joe Stevenson	David Turner	Christian Werstein
Schactman Family Charitable Gift Fund	Susan Sheehan	Scott and Jennifer Stewart	Unity Evangelical Lutheran	Jeffrey West and Laura Koontz
	Nikhil Shekar	Thomas and Tiffani Stewart		
		Cary G. Stolar		

## \$1,000–\$2,499 (continued)

Lawrence and Stephanie  
Westermeyer

Jean Wetzel

Penny J. White

Todd White

William and Marcia Whitson

Mark and Marla Whittenburg

Travis Widman

Deborah Wiese

Kristen Wild

Larry Willick and  
Lori Goldman

Luther and Carolyn Willmore

Vernon and Kathleen Wilmes

Robert and Joyce Winkler

Stephen Wintermann

James and Kathryn Wire

Lance Witcher

Janelle Wohrley

Joseph and Carolyn Wojtal

Pamela Wollenberg

Wong Family Foundation

Jim Wood

Sun John and Li-Pai Yuen

Lon and Judy Zimmerman

Zurich American Insurance  
Company

## Hunger Healers

A special thank you to our more than 500 monthly donors, who contributed nearly \$245,000 in FY2021. These valued advocates sustain our work while ensuring consistent access to the funds OFS needs to heal hunger.

## Thank You for Supporting Our Mission to #HealHungerSTL

The passion and caring of Operation Food Search donors, volunteers and partners enable us to provide both food and hope to others. We are grateful for the many forms of support we receive.

### Donate

[Donate.OperationFoodSearch.org](https://Donate.OperationFoodSearch.org)

### Volunteer

[Volunteer.OperationFoodSearch.org](https://Volunteer.OperationFoodSearch.org)

### Give Food

[Food.OperationFoodSearch.org](https://Food.OperationFoodSearch.org)

### Spread the Word



[/OpFoodSearch](https://www.facebook.com/OpFoodSearch)



[/OpFoodSearch](https://www.youtube.com/OpFoodSearch)



[/OpFoodSearch](https://www.instagram.com/OpFoodSearch)



[@OpFoodSearch](https://twitter.com/OpFoodSearch)



Greater St. Louis

**OperationFoodSearch.org**

1644 Lotsie Boulevard, St. Louis, MO 63132

(314) 726-5355