



**Operation
Food Search**

40 Years Of Healing Hunger

**Searching for a Future
Free from Hunger**

Our Mission

To nourish and educate
our neighbors in need to
heal the hurt of hunger

Operation Food Search provides immediate food assistance to individuals and families, serving 200,000 people every month. We also work to address the underlying causes of hunger that impact the ability to put food on the table. Through programs, partnerships and policy change, we strive to ensure that all bistate-area children and adults have the nutrition, food and skills needed to live healthy lives.



Our Year in Review

2021 marked the 40th anniversary of Operation Food Search's incorporation as a nonprofit organization, and it was a year of both celebrations and continued challenges. As we began our fiscal year (Oct. 1, 2020), we remained fully immersed in the adversities of the pandemic, along with the rest of the world. Those challenges continue today, beyond what many of us expected. Yet we have found hope and inspiration in doing our work and in the resiliency we see all around us.

The need has increased, but so have the solutions to the problem of hunger. We've seen greater numbers of new donors, created more partnerships and expanded our programs, enabling us to not just face the trials of this ordeal, but to move further upstream to address the underlying causes of food insecurity.

In this report, you'll learn more about our continued adaptation to the demands of the pandemic, our outstanding partners and our generous supporters. Most of all, you'll see how our strategic approach to going beyond meeting the immediate need is designed to ensure that all those who are working hard to put food on the table can do so, today and in the long term.

Forty years ago, the founders of OFS began this quest in search of food for the hungry. They could not have predicted the need that would still exist today. But what they did know remains true four decades later: the solution lies in the community of caring people who are committed to helping others. We are privileged to be a part of that community and to have your partnership in creating a future free from hunger.

Kristen V. Wild, *President & CEO*

Alan Schultz, *Board Chair*

Our Leadership

Senior Leadership Team



Kristen Wild
President & CEO



Carlton Adams
Chief Operating
Officer



Julie Mann
Chief Financial
Officer



Trina Ragain
Chief Innovation
Officer



Ellen Reed-Fox
Chief Development
Officer



Jocelyn Fundoukos
Director of
Communications



Kristen Frazier
Human Resource
and DEI Manager

Board of Directors

Officers

Chair:
Alan Schultz
Bayer

Vice Chair:
Erin Brooks
Bryan Cave
Leighton
Paisner LLP

Treasurer:
Amy Altholz
RubinBrown

Secretary:
Julie Hoff
CultivateHR

Members

Dr. Kelvin Adams
St. Louis Public
Schools

Laura Bryant
Formerly Enterprise
Holdings

Nik Brym
Wee Ones

Ryan Cuba
Schnuck Markets Inc.

Lisa Pelikan
Edward Jones

Skip Spielberg
Formerly Bueno Bags

Steve Spratt
Ascension

Jessica Stephan
Bunge

Rick Stevens
Christian Hospital

Friends Board

Officers

Chair:
Amanda Ruby
Bayer

Vice Chair:
Katie Hebson
AIG

Secretary:
Shelby Akos
Bally Sports Midwest

VP of Membership:
Barrett Feltmeier
Edward Jones

Members

Clayton Bax
Commerce Bank

Sean Berry
Nidec Corporation

Alyssa Burks
TD Ameritrade

Tess Coyman
Select Specialty
Hospital

Kelly Cubellis
Allspring Global
Investments

Julie Feltmeier
Enterprise Holdings Inc.

Brittany Forrest
Riverfront Times

Madeleine Garbo
Ernst & Young

Suzanne Hart
Bryan Cave Leighton
Paisner LLP

Rica Hendrix
Brighter Vision
Psychological Services

Katie Holtgrave
Anders CPAs +
Advisors

Katie Mueller
BJC Healthcare

Alex Rich
Audacity Inc.

Austin Schultz
GadellNet

Cole Silverman
SSM Health Rehabilitation

Mitch Slattery
Edward Jones

Chris Sawicki
Anheuser-Busch

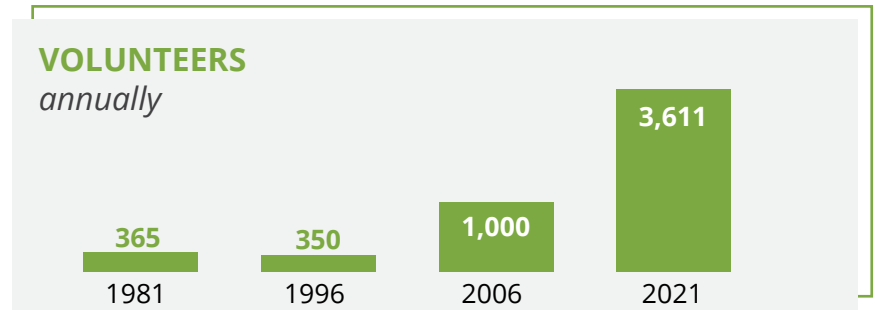
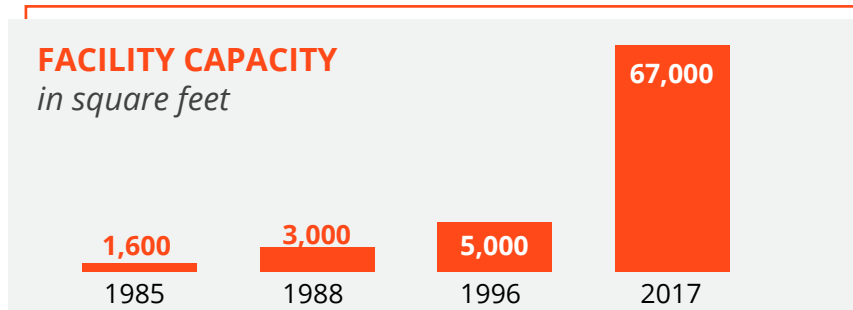
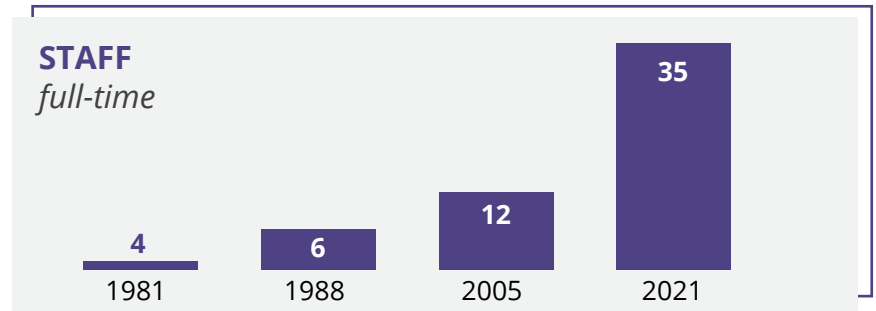
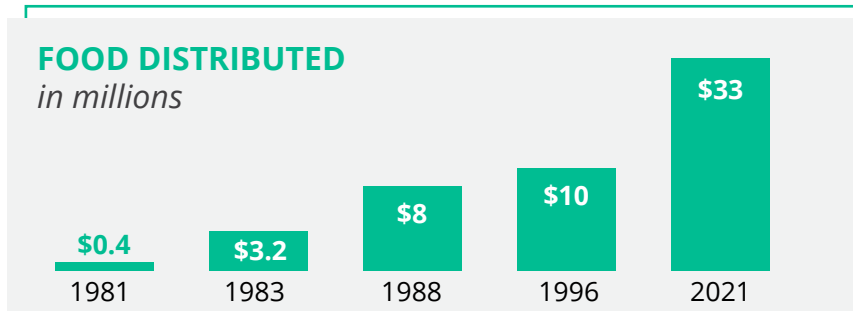
Mark Taylor
Centene Corporation

Scott Whitehill
Arthur J. Gallagher
& Co.

Our History

Four Decades of Work to Increase Food Access

More than 40 years ago, dedicated members of a coalition of individuals of the Catholic, Protestant and Jewish faiths initiated an organized search for food to help the hungry. What began as the St. Louis United Hunger Effort became Operation Food Search in 1981. Since then, OFS has worked tirelessly to fill a vital need in the bistate community. Now, OFS is going beyond searching for food: *We are searching for solutions.*



The Path Toward Better Solutions

As we continue our work to heal hunger, we remain true to our origin as a rescue food bank while also addressing the social determinants of health. We provide food and related services to more than 200,000 individuals every month — one-third of whom are children — through a network of 330 community partners in 27 Missouri and Illinois counties. In addition, our community nutrition programs empower individuals and families to eat healthier food on a budget. Our policy and advocacy work strengthens support for safety-net programs and increases opportunities for everyone to put food on the table and live healthier lives.

There is no question that hunger is a very serious problem. But with persistence, dedication, collaboration and creativity, hunger is solvable. And with the help of our partners, volunteers, donors and community members, OFS is finding solutions and helping to create a healthier, more vibrant region.



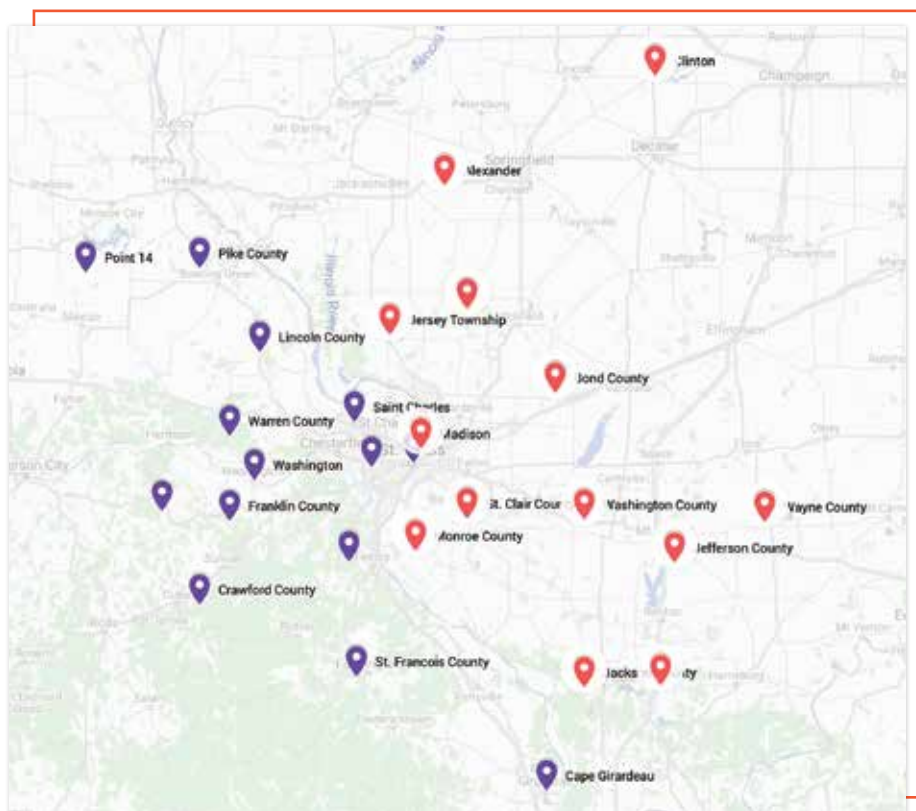
OFS Service Area

Missouri Counties

Cape Girardeau Pike
 Crawford St. Charles
 Franklin St. Francois
 Gasconade St. Louis City
 Jefferson St. Louis County
 Lincoln Warren
 Montgomery Washington

Illinois Counties

Alexander Madison
 Bond Marion
 Clinton Monroe
 Jackson St. Clair
 Jefferson Washington
 Jersey Wayne
 Macoupin



Our Impact

FY 2021 in Review (Oct. 1, 2020 - Sept. 30, 2021)

\$33 million+

in food distribution



18,439

queries on our Hunger Hotline, text line and Find Food map



21,856

pounds of produce rescued from local farms



SUMMER MEALS

843,240

child meals served



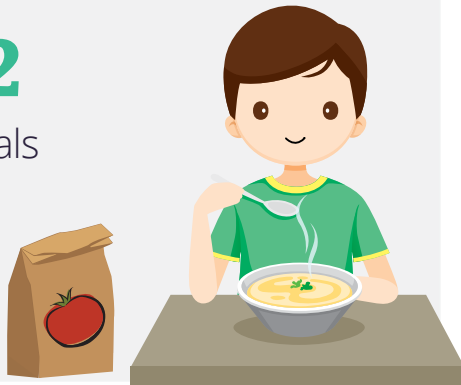
Additional food provided at Summer Meal sites and other distributions

AFTERSCHOOL REFUEL

served

8,152

child meals



OPERATION BACKPACK

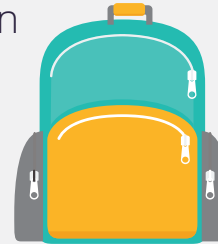
distributed

589,035

meals to students in

338 schools in

15 counties



Child meal sites included

488 locations in

15 counties



Child Meal Map had

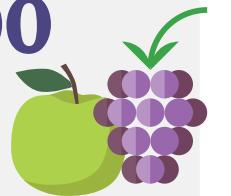
4,085

online visits



1,104,700

pounds of produce



106,836+

family food boxes



ADVOCACY

23 nutrition- & health-related bills **7** of those bills submitted testimony



5 of those bills passed session including legislation creating a Statewide Food Security Task Force

conducted **40** interviews with WIC participants

FRESH RX

Food Is Medicine Programs for Pregnant Women, Children and Families

108 expectant families participated in Fresh Rx: Nourishing Healthy Starts



38.2 WEEKS median gestational age of infants born to Fresh Rx graduates

37 weeks is considered full term.

93% of infants born at a healthy birth weight



8,820 meals distributed

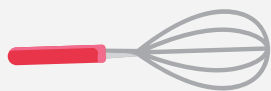
compared to the rate of 83.7% of births for women living in the city of St. Louis who received their care through the Medicaid for Pregnant Women program in 2018

116% reduction in maternal depression & anxiety symptoms

57% reduction in severity of household food insecurities

COMMUNITY NUTRITION

1,701 people empowered by programs **483** classes & store tours in 21 counties



36 cooking and quick-tip videos



13,963 total interactions on social media posts featuring nutrition education

Our Programs

Meet the Immediate Need

All Operation Food Search initiatives support our strategy to alleviate food insecurity and address the underlying causes of hunger. This work aligns under three pillars: Meet the Immediate Need, Build Nutrition IQ and Champion Change.



AfterSchool ReFuel

To reduce health issues stemming from undernutrition, OFS provides free shelf-stable, grab-and-go meals to children on weekdays during the academic year. Known as AfterSchool ReFuel, the program is available at no cost to children ages 5-18 at 15 area locations. These “super snacks” — which include milk, protein, fruit, vegetable and grain — supply the energy and nutrition the children need to focus on homework and other after-school activities. More than 8,000 child meals were served through the program in FY2021.



Operation Backpack

Since 2006, Operation Backpack has provided weekly sacks of kid-friendly, shelf-stable food to get students through the weekend, when school meals are unavailable. Participating children are discreetly given these backpacks to take home at the end of the school week, enabling them to return to school Monday with the good nutrition and focus needed for academic success. More than 589,000 meals were provided to 338 schools in 15 counties during this fiscal year.



Summer Meals

This year marked OFS’s 10th year as a sponsor of the Summer Food Service Program. Funded by the USDA, the program ensures that children continue to receive nutritious meals when school is not in session. Kids are more at risk for hunger when school is out, and this program provides a crucial link to nutrition normally provided at schools. Of our 35 meal sites, 16 sites also distributed family food boxes and fresh produce boxes. Due to the pandemic, we extended our Summer Meals program and were able to expand our reach to other family members as well. OFS provided more than 843,000 meals from Oct. 1, 2020, to Sept. 30, 2021.



Gleaning

Gleaning is rescuing fresh food from farms that would otherwise be unharvested or wasted. Produce gathered in the fields or picked up after the harvest is quickly distributed to food-insecure individuals and families in the region.

The benefits of gleaning include reducing food loss; increasing access to healthy, fresh, local food for food-insecure individuals and families; and creating tax benefits for farms that donate food. Since the start of the gleaning program in 2020, Operation Food Search staff and volunteers have rescued nearly 25,000 pounds of produce from local farms. Partners include Eckert's Family Farms, Liberty Apple Orchard and Three Rivers Community Farm.



Community Food Partner Agencies

OFS's partner agencies—pantries, churches, shelters and other community food sites—are vital to our ability to get food to the community. As a food bank, Operation Food Search secures funding, rescues and sources food through a variety of ways, and then sorts and distributes food to our agencies. We also support them through training, capacity building, nutrition education resources and more. They then serve the community directly.

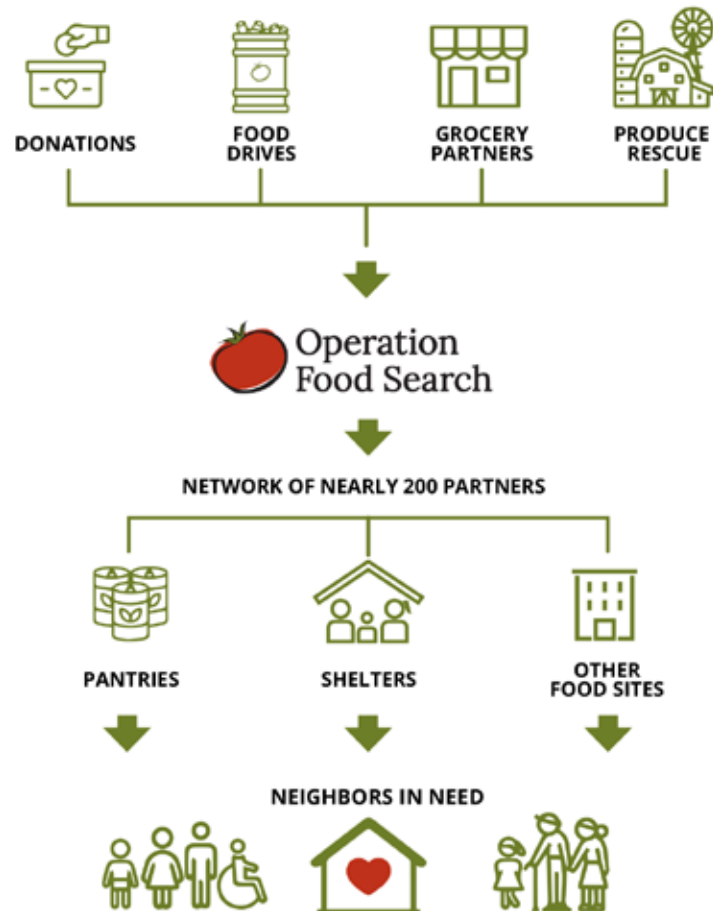
Our nearly 200 partner agencies are largely run by volunteers who often are older adults in higher-risk categories for COVID-19. This year, they were nothing short of heroic in their determination to help individuals and families struggling with food insecurity. These dedicated partners create 1.5 million human interactions each year. We could not do our work without them! **View a full list of our partner agencies on the next two pages.**

Our Programs

Meet the Immediate Need

More About Our Community Food Partner Agencies

Our Community Food Partner Agencies are vital to our ability to get food to the community. The nearly 200 partner agencies, including pantries, churches, shelters and other community sites, are largely volunteer-run and require great dedication to the people they serve.



Our Agencies

- Affton Christian Food Pantry
- Agape Help House of Pacific
- Agape House Franklin County
- Agape Ministry of Warren County
- Agape SDA Pantry
- Almost Home
- Alton Guardian Angel Pantry
- Anointed Hands
- Arnold Food Pantry
- Ascension Food Pantry
- Baptist Ministries South Center
- Berean Food Pantry
- Bismarck Church of God Food Pantry
- Blessed Teresa of Calcutta (Church St.)
- Blessed Teresa of Calcutta (Elizabeth Ave.)
- Bond County Food Pantry
- Bostick Temple
- Bread for Life Food Pantry
- CAASTLC
- Caring & Sharing
- Caseyville Food Pantry
- Cathedral of Y Shua Worship Center
- Catholic Services of St. Clair
- CCW Food Pantry
- Centennial's Food Pantry
- Chapel for the Exceptional (The Waymakers)
- Chapel of the Lake
- Church of the Living God Food Pantry
- Circle of Concern
- Circle of Light Associates
- City Hope Bible Church, Inc.
- City of Peace Food Pantry
- City Temple Assembly of God
- Collinsville Food Pantry
- Community Care Center, Inc.
- Community Helping Ministry
- Community Hope Center
- Community Interfaith Food Pantry
- Community Outreach of Gerald
- Cosgrove's Soup Kitchen
- CPR Food Pantry
- Crisis Food Center
- Crisis Nursery
- Dayspring Foursquare Pantry
- Daystar Community Program
- Deliverance Church
- DeSoto Food Pantry
- Diane's House
- Dunn Road Manor
- Elmwood Memorial Emergency Food Pantry
- Elvins Food Pantry
- Emmanuel Food Pantry
- Emmaus Homes, Inc.
- Epworth Drop-In Center
- F.A.S.T. (Foster Adoption Support Team)

Our Food Partner Agencies *(continued)*

Faith Church Earth City
 Faith Church St. Louis
 Family Food Pantry
 Farmington Ministerial Alliance
 Feed My People - Centralia
 Feed My People - High Ridge
 Feed My People - Lemay
 First United Methodist Church
 Gethsemane Church
 Gillespie Care Center
 Glen Ed Pantry
 Good Samaritan Ministries
 Grace Fellowship
 Grace New Covenant Church
 Grace U.M.C. Food Pantry
 Great Things Incorporated
 Guardian Angel @ Hosea House
 H.O.P.E. Ministries
 H.O.P.E. Ministry - Wentzville
 Halls Ferry Manor
 Harvester's Food Pantry
 Helping Hands Food Pantry
 Helping Hands of Ferguson
 High Ridge Food Pantry
 Hillsboro Food Pantry
 Hilltop Manor
 Hope Christian Church Food Pantry
 Hope Church at Mills Mall
 Hope Ministries of Geff, IL
 ICNA Relief USA
 Immaculate Conception of Dardenne
 Immaculate Conception, SVDP
 Immaculate Heart of Mary, SVDP
 Isaiah 58 Ministries

Jackson Park Senior Apartments
 Jefferson County Rescue Mission
 Jewish Family Services
 The Joseph Center
 Keeping the Faith Empowerment Center
 Labor of Love Ministries
 Law & Grace Ministry at Faith Baptist Church
 Lessie Bates Davis Neighborhood House Food Pantry
 Life Center International COGIC
 Life Wise STL
 Love in Action
 Loving Hearts Outreach
 McBride Foundation
 MCCB Transitions
 Merry Makers New Cote Brilliante COG
 Millstadt Senior Services
 Mind of Christ Church
 Moscow Mills Community Food Pantry
 Mt. Olive Care Center
 Nash Prayer Band Church
 New Jerusalem SDA
 New Journey Baptist Church
 Northside SDA
 O.A.S.I.S. Food Pantry
 O'Fallon Community Food Pantry, Inc.
 Operation Food Sharing - Steelville 1st Assembly
 Our Lady of Guadalupe, SVDP
 Our Lady of Perpetual Help, SVDP
 Our Lady's Inn

Our Lady's Inn - Defiance
 Ozark Food Pantry
 PCAC - Southside City Services
 Peace Pantry
 Pine Lawn Glen Echo Food Pantry
 Powell Terrace Baptist Benevolence
 Project Hope
 Ritenour Co-Care Food Pantry
 Riverview C.O.G.
 Room at the Inn
 Sacred Heart SVDP
 Salvation Army Alton Pantry and Shelter
 Salvation Army Family Haven, CIP
 Salvation Army O'Fallon
 Salvation Army St. Charles
 Second Blessing
 Second Presbyterian
 Sister Christine's Pantry
 Smithton Food Pantry
 SonLight M.B. Church
 Sorento Food Pantry
 Soup-N-Share
 St. Anthony Food Pantry
 St. Augustine - Wellston Center
 St. Augustine SVDP
 St. Charles Senior Center
 St. Francis Borgia Food Pantry
 St. Joachim and Ann Care Service
 St. John House of Hope
 St. Joseph M.B. Church
 St. Louis Adventist Community Services
 St. Louis Empowerment Center
 St. Louis Youth Build

St. Michael's Food Pantry SVDP
 St. Nicholas Food Pantry
 St. Patrick Center
 St. Patrick's SVDP
 St. Vincent DePaul Pantry - Farmington
 Star Bethel Food Pantry
 State Park Food Pantry
 Storehouse Food Pantry
 Sunshine Ministries
 TEAM
 Teen Challenge of Mid-America
 Teen Challenge of St. Louis
 Tri Food Pantry
 Trinity Presbyterian Church
 Universal Church of Jesus Christ
 University City Senior Center
 Urban League - City Division
 Urban League Metro Community Outreach
 Urban League Patch Center
 The Wesley House Association
 West Central Church of Christ
 Wilhelmina Hardin Food Pantry
 Women's Safe House
 Word of Life
 Zion Lutheran Food Pantry
 Zion Temple Food Pantry
 Zion Travelers Community Involvement Association
 Zion United Church of Christ

Our Programs

Build Nutrition IQ



Community Nutrition

The Community Nutrition department operates individual and group-level interventions within community settings, creating changes in knowledge, attitudes, behavior and health outcomes in individuals, families and small, targeted groups.

Nutrition education services, which are a part of this effort, are offered to our Community Food Partner Agencies free of charge. Services include on-site cooking demonstrations, recipe sampling, nutrition lessons and nutrition education materials. All educational services are aligned with the food being distributed by pantries, churches, soup kitchens and shelters.



Operation CHEF

Operation CHEF (Culinary Habits to Empower Families) is a nutrition-focused cooking course that teaches kids, teens, adults and families at risk of hunger fundamental culinary skills through hands-on lessons. Because low-income individuals and families frequently prepare meals at home, strategies to help them prepare nutritious home-cooked meals are critical in the fight to end childhood hunger.

With nutrition education woven into every recipe, discussion and activity, the program presents good nutrition as fun, accessible and delicious. Our team promotes discussion and sharing in these classes, so participants learn from each other and enjoy a positive experience.

"We give your nutrition education information to our volunteers to share with the guests. They have found the information is then spreading by word of mouth throughout the community. One person who does not come to the pantry asked a volunteer for the chicken tetrazzini recipe because the person had heard it was so good!"

—Bond County Food Pantry



Virtual Classes

OFS uses videos as well as Facebook Live and other virtual platforms to connect directly with individuals and families. From the comfort of their home kitchens, participants practice culinary skills alongside an instructor in an interactive class. Quick-tip videos provide basic and advanced information at the pace of each viewer. These virtual cooking classes — as well as grocery store tours, cooking demonstrations and nutrition presentations — teach participants to cook delicious, nutrient-rich food on a budget in a direct-to-consumer format.



Workplace Wellness

Americans working full time spend, on average, more than one-third of the day, five days a week, at their workplaces. Effective workplace-based programs and policies can reduce health risks and improve quality of life. Toward this goal, we collaborate closely with each organization to create a personalized approach to combat their employees' specific health-related disparities.

Our Programs

Champion Change

FRESH

Food Is Medicine

Our innovative programs treat food as medicine and are designed to improve the overall health of individuals and communities.

Fresh Rx: Nourishing Healthy Starts

Food-insecure mothers have greater risk of chronic conditions and complications during pregnancy, and their infants are more likely to be born early and underweight. In addition, the delivery for an underweight newborn costs \$44,000 more, on average, than the delivery for a healthy-weight newborn.

After a successful pilot phase, we're partnering with local health care providers, as well as the Social Policy Institute at Washington University in St. Louis, to conduct a randomized control trial of 750 families over three years to determine the impact of the Fresh Rx program on food security and birth outcomes for Missouri women who are Medicaid beneficiaries.

Following screening for food insecurity by the managed care companies administering the Medicaid program, OFS provides half of the families with a weekly delivery of ingredients to make three nutritious family meals, as well as cooking classes, nutrition resources and supportive services. The other half receive food and nutrition resources only.

Claims data for the two study groups will be compared with data for nonparticipants and the findings provided to policymakers to help them make informed decisions about the value of addressing food insecurity as a reimbursable health-care expense under the Medicaid program.



Fresh Rx: Prescribing Healthy Futures

This year, OFS began a partnership with the Division of Endocrinology and Diabetes at St. Louis Children's Hospital to conduct a pilot program serving 30 young people with a diagnosis of type 1 diabetes. Participants and their families will receive a weekly meal kit delivery, regular consultations with a registered dietitian and supportive services from a care manager. The goal of the program is to improve management of symptoms, lower hemoglobin A1C levels and decrease episodes of diabetic ketoacidosis.



Policy & Advocacy

OFS advocates for policies that address the underlying causes of hunger and strengthen individuals and families in Missouri. Our goal is to create a robust and equitable health and food safety net system that increases opportunities for all Missourians to put food on the table and live healthier lives. The 2021 Missouri legislative session brought several victories for food and nutrition policy. Our team supported five bills that passed session, including legislation creating a Statewide Food Security Task Force.

Our advocacy work includes training and support for Momvocates, champions for health and nutrition safety net programs who began their work in 2021 with storytelling training. The goal is to use their voices to increase understanding of food insecurity and advocate for policies that improve health and food access.



School Breakfast

When children eat breakfast, they perform better on tests, experience improved memory and concentration, achieve stronger attendance records and visit the school nurse less often.

With support from the Food Research and Action Center, OFS is working to increase breakfast participation across the state and to showcase innovative approaches and best practices. For example, Breakfast After the Bell models improve traditional school breakfast by changing the location and time. Rather than being offered in the cafeteria before school starts, breakfast is moved into classrooms, where students are more likely to have the opportunity to eat, or onto convenient kiosks where students can easily access grab-and-go meals. OFS provides resources, information and technical assistance to ensure every student has the chance to eat a nutritious breakfast at school each morning. Learn more at MoSchoolBreakfast.org.



WIC Innovation

The Special Supplemental Nutrition Program for Women, Infants and Children (WIC) is a federal public health program that provides food assistance, nutrition education, breastfeeding support and health-care referrals for pregnant women, new mothers and infants, and children up to age 5. Research shows that access to nutrition during pregnancy and in the first few years of life has long-term impacts on health. OFS is working to increase participation among eligible Missourians by conducting a multiyear research study designed to identify pain points from each stakeholder that impede WIC satisfaction and utilization. We are learning from WIC participants, retailers and providers to develop innovative solutions and create a program that works better for everyone involved.

Our Events

Oct. 1, 2020 - Sept. 30, 2021

Friends Board Events

The OFS Friends Board organized two virtual events in place of its annual Party for Packs. These dynamic, delicious and interactive evenings were attended by nearly 200 people and raised a total of over \$51,000 combined. Proceeds benefited OFS's Operation Backpack program, which distributes sacks of kid-friendly, shelf-stable food each week to get students through the weekend, when school meals are unavailable.



Event Committee

Shelby Akos	Rica Hendrix
Clayton Bax	Katie Holtgrave
Sean Berry	Katie Mueller
Alyssa Burks	Alex Rich
Tess Coyman	Amanda Ruby
Kelly Cubellis	Chris Sawicki
Barrett Feltmeier	Austin Schultz
Julie Feltmeier	Cole Silverman
Brittany Forrest	Mitch Slattery
Madeleine Garbo	Mark Taylor
Suzanne Hart	Scott Whitehill
Katie Hebson	

Pasta for Packs

Oct. 12, 2020

Our virtual cooking event with James Beard Award-winning chef Gerard Craft was a huge success. Chef Craft guided beginners and foodies alike through the preparation of a salad and fresh pasta dish with meal kits curated by his Clayton restaurant, Pastaria. This fun, interactive evening was a dynamic and delicious event for all ages, and more than \$21,000 was raised to support Operation Backpack.

Sponsors

Ernst & Young \$2,500
 UMB Bank \$2,500
 McCarthy, Leonard &
 Kaemmerer L.C. \$1,000

Edward Jones \$500
 Peoples National Bank \$400
 Ralph & Lee Anne Quatrano \$400



Operation BBQ

May 13, 2021

In this virtual cooking event with Sugarfire Smoke House's award-winning Executive Chef Matt Glickert, at-home participants were guided through the preparation of a full meal, including kabobs, lemon herb coleslaw and potato salad. Attendees preordered kits of ingredients paired with 4 Hands Brewing's City Wide beer. This event raised more than \$30,000 for Operation Backpack.

Sponsors

Ernst & Young \$2,500

AIG \$2,000

McCarthy, Leonard &
Kaemmerer L.C. \$1,000

Peoples National Bank \$400

TSI Global Companies LLC \$400



Our Events

Oct. 1, 2020 - Sept. 30, 2021

Swing to Heal Hunger Golf Tournament

Oct. 5, 2020

OFS welcomed 115 golfers to WingHaven Country Club for our 27th annual Swing to Heal Hunger golf tournament. The outing raised more than \$77,000 to support OFS's work.

Lunch was donated by Russo's, and dinner was prepared by students in St. Louis Community College's hospitality studies program.



Sponsors

Title (\$20,000)

Ascension

Champion (\$10,000)

Seeger Toyota

Eagle (\$5,000)

Becker Iron & Metal

Birdie (\$2,500)

Core Telecom
Straub's Market
Toyota Financial Services
Quiet Village Landscaping

Major In-Kind

Molson Coors
Russo's Catering
St. Louis Community College

Invitational (\$1,700)

CJC Transport
Dema
Terry and Barb Donahue
Gabriel Group
Greensfelder
SoTel System Inc.
Vistage

Hole (\$500)

Gadellnet
Great Southern Bank
Kurt and Julie Hoff
Jan-Pro
Mike and Kate Kupstas
Vogel Heating

Event Committee

Roger Bailey*
Clayton Bax
Alejandra Berra
Jim Goebel
Art Kerckhoff
Brian Nale
Andy Seeger
Steve Spratt



*We are grateful for the enduring friendship and support of the late Roger Bailey. He will be greatly missed.

Feast for Change Inaugural Event: Sept. 11, 2021

Our inaugural Feast for Change farm-to-fork experience marked our 40th anniversary and raised over \$90,000 in support of our future work. The evening highlighted significant moments in OFS's history, starting with our founding in 1981 as a food rescue organization.

The evening paid special tribute to Mike and Kate Kupstas, the inaugural Champion for Change Award honorees. Mike, CEO of Lion's Choice, served on the OFS board from 2003 to 2018 and has been instrumental in helping OFS grow through business connections, food donations and leadership development. Kate is a longtime supporter and leader of a group of Operation Backpack volunteers.



Sponsors

Urban Farm (\$10,000)

Mike and Kate Kupstas

Farmer's Market (\$5,000)

Bryan Cave Leighton Paisner LLP
Warehouse of Fixtures

Community Garden (\$2,500)

Ascension
Fifth Third Bank
Louis H. Kohler Foundation
Elaine Moss
National Cart Company
Ole Tyme Produce
PNC Bank
Post Holdings Inc.
Tech Electronics
Volpi

Bee Keepers (\$1,000)

Amy Amelung
Chris Burrige
Craig Evans and Denise
Phelabaum Evans
Luxco
Musick Construction
Peoples National Bank
Skip and Elaine Spielberg

Major In-Kind

Rockwell Beer Company
Unshackled

Event Committee

Amy Boltzman
Claire Conroy
Katy Dreschel
Denise Phelabaum
Evans
Jill Gaither
Traci Goldstein
Jill Hunt
Susan Kemppainen
Gina Kurre-Rogers
JoAnn Mattingly
Marcia Peters
Kate Stewart
Sheila Welge

Our Volunteers

Volunteers Are Critical to Our Mission

Halfway through the fiscal year, we were able to welcome a limited number of volunteers back to the warehouse to help sort food, pack family meal kits and prepare backpacks for distribution.

In addition, our volunteers worked tirelessly to provide food and essential supplies to others by helping at gleaning events, Shop Out Hunger, Summer Meal distributions and much more!

3,611 volunteers
devoted **76,743** hours,
saving OFS **\$2.19 million**
during the fiscal year.

Volunteer Groups

Bryan Cave Leighton Paisner LLP

Enterprise Holdings Inc.

GiftAMeal

The Home Loan Expert

Humana

KARES Camp

Leigh Consulting

Marsh & McLennan Agency

Maryville University

Musick Construction

Novus International

Olin Corporation

Panera

Safety National

Saint Louis University
School of Medicine

Schnuck Markets

Villa Duchesne and Oak Hill School

Washington University School of Law

World Wide Technology



Our Community Food Drives

Food and Fund Drives raised more than \$1 million in food and monetary donations.

These volunteer-led efforts are crucial to our ability to get food to individuals and families in our service area.

Leadership Food Drives*

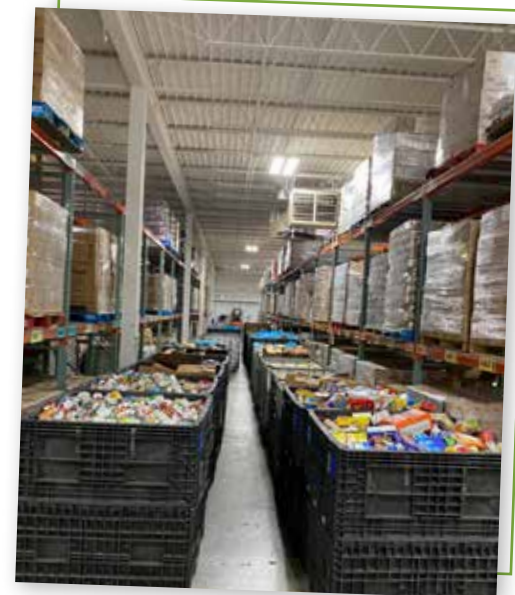
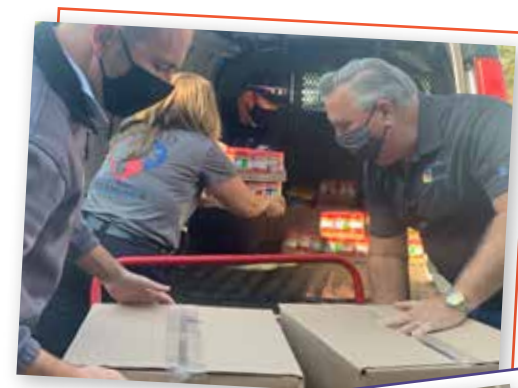
Edward Jones
The Harvard Club of St. Louis
Ladue School District
Missouri Democratic Party
Randall's Wine & Spirits
Six Flags St. Louis
St. Charles County Ambulance District
St. Louis B-Works Cranksgiving Event
Whitfield School
Woodard Cleaning & Restoration

Leadership Fund Drives**

105.7 The Point
Bayer
The Dave Glover Show 97.1 FM
ELCO Chevrolet Cadillac
Enterprise Holdings Inc.
Federal Reserve Bank of St. Louis
GM Financial
Masonmade Stone Design + Supply
McCarthy Holdings, Inc.
Millipore Sigma
Mosby Building Arts
Object Computing Inc.
RGA Reinsurance Company
True Refrigeration
Washington University School of Medicine

*More than 4,000 pounds of food donated

**More than \$5,000 donated



Our Partnerships

Dedicated Partners Empower Our Work

OFS collaborates with a broad range of organizations and entities to fulfill our mission. We are grateful for the resources, expertise and support they provide.

Partners

Area Resources for Community and Human Services (ARCHS)
Bayer YMCA
Becker Iron and Metal
Beyond Housing
Boggs, Avellino, Lach & Boggs LLC
Bryan Cave Leighton Paisner LLC
Center for Youth on the Rise
Christian Hospital
City of Ferguson Parks and Recreation
City of Wellston
Eckert's Family Farms
Equity Homes
First Things First Foundation
Girl Scouts of Eastern Missouri
Greater Grace Church
Greater St. Louis Area Council
Boy Scouts of America

Home Sweet Home
International Institute
The Kaufman Fund
Liberty Apple Orchard
Lion's Choice
The Little Bit Foundation
Mehlville School District
My Diversity Circle
NAACP
OB Care Center at SSM Health DePaul Hospital
People's Health Centers
Phoenix Solutions
Share Our Strength
Share the Harvest
Social Policy Institute at Washington University in St. Louis

SoTel Systems Inc.
SSM Health DePaul Hospital
SSM Healthcare
St. Louis Area Diaper Bank
St. Louis Area Foodbank
St. Charles City-County Library
St. Louis Children's Hospital
St. Louis County Division of Youth Services
St. Louis County Library
St. Louis Public Library
Sunset Transportation
That's So Good LLC
Three Rivers Community Farm
United for Children
University of Missouri Extension
Urban League of Metropolitan St. Louis
Warehouse of Fixtures



Our Partnerships

Innovative Collaborations

“Repurpose for a Purpose is one of the most incredible projects I have worked on in my career. Instead of this furniture ending up in a landfill, it was repurposed to help feed those in need!”

—Bonnie S. Wedel, Bryan Cave Leighton Paisner LLP



Repurpose for a Purpose

Through this program, businesses can dispose of assets and materials while generating revenue to support OFS's hunger relief work. The program began in 2008, when OFS board member Skip Spielberg collaborated with Bonnie Wedel, facilities manager at Bryan Cave Leighton Paisner LLP, to arrange for out-of-use furniture to be repurposed in order to benefit OFS.

How It Works

OFS connects businesses to our trusted partners, who are committed to philanthropy and social responsibility. They help businesses dispose of unwanted equipment and furniture, creating a donation that literally puts food on the table for food-insecure families in the region.



Healthy Eating Resources

This video library was created through a partnership between SSM Health DePaul Hospital and Operation Food Search. The series shares information about healthy food choices with people who may be food insecure, are working to make healthy choices on a budget, or are interested in improving health through diet.

The eighteen videos cover topics such as Meal Planning Basics, Hidden Vegetables and Shopping for Produce. They can be viewed on our website at OperationFoodSearch.org/healthy-eating-resources.

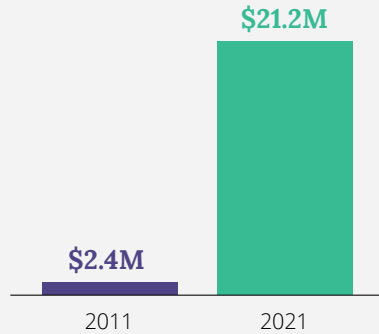
Our Financials

FY 2021

TEN-YEAR GROWTH

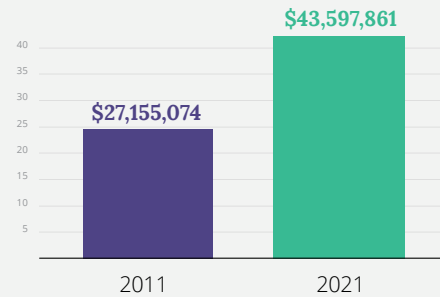
Total Assets

Nearly **9 times** larger in 10 years.



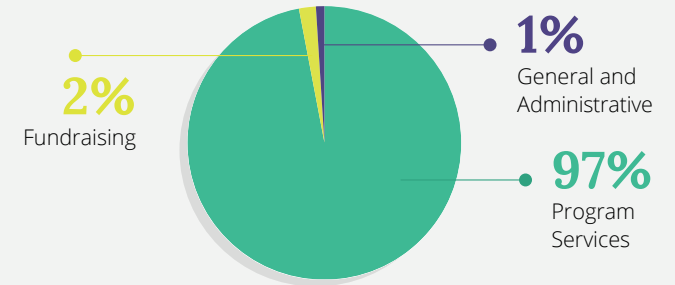
Total Revenue

Increased by **61%** in 10 years



FISCAL YEAR 2021

Expense Allocation



ASSETS

Current assets:

Cash and cash equivalents	\$ 2,682,556
Investments	3,739,260
Receivables and promises to give	1,046,056
Inventory	1,644,345
Prepaid expenses	44,540

Total current assets

Property and equipment, net of accumulated depreciation	5,113,525
Unconditional promises to give, net of discounts	73,639
Grants receivable, net of discounts	173,149
Endowment	6,675,106

Total assets

\$ 21,192,176

2021

LIABILITIES AND NET ASSETS

Current liabilities:

Accrued expenses	\$ 333,518
------------------	------------

Net assets:

Without donor restrictions	16,751,654
With donor restrictions	4,107,004
Total net assets	20,858,658

Total liabilities and net assets

\$ 21,192,176

2021

Our Financials

FY 2021

OVERVIEW			
	2021		
	Without Donor Restrictions	With Donor Restrictions	Total
Support and other revenue:			
Support:			
Cash and investment contributions	\$ 6,915,790	\$ 1,097,139	\$ 8,012,929
State support	2,427,146	-	2,427,146
Grant revenue	3,966,543	718,646	4,685,189
Special events (net after \$62,009 of expenses)	172,260	-	172,260
Subtotal	13,481,739	1,815,785	15,297,524
Other non-cash contributions	27,285,781	-	27,285,781
Total support	40,767,520	1,815,785	42,583,305
Other revenue (loss):			
Investment income	628,029	264,685	892,714
Rental income	2,430	-	2,430
Other income	119,412	-	119,412
Total support and other revenue	\$ 41,517,391	\$ 2,080,470	\$ 43,597,861
Net assets released from restrictions	1,110,583	(1,110,583)	-
Functional expenses:			
Program services	36,972,408	-	36,972,408
Management and general	334,645	-	334,645
Fundraising	809,354	-	809,354
Total functional expenses	38,116,407	-	38,116,407
Changes in net assets	4,511,567	969,887	5,481,454
Net assets, beginning of the year	12,240,087	3,137,117	15,377,204
Net assets, end of the year	\$ 16,751,654	\$ 4,107,004	\$ 20,858,658

The COVID-19 worldwide pandemic continued to impact the Organization. Stimulus bills provided extra support that helped fund additional food needed in the community. However, supply chain issues continued, food donations were disrupted and the demand for food assistance remained high. The Organization continued to adapt to limit transmission of the disease by following food distribution models that included more drive-through and grab-and-go options, adjusting warehouse procedures to include additional safety measures, continuing to provide numerous virtual and online resources for community nutrition, food access and other assistance, and partnering with additional organizations to provide leadership and support for hundreds of thousands of individuals in the bi-state region.

Our Donors

Oct. 1, 2020 - Sept. 30, 2021

Major In-Kind Donations

\$1,000,000+

Dierbergs Markets	Hope and Encouragement for Humanity	Schnuck Markets
-------------------	-------------------------------------	-----------------

\$500,000—\$999,999

Central Paper Stock	Keefe Supply
Good360	US Foods

\$100,000—\$499,000

Clark Logistic Services	Little Caesars Pizza
Dynamic Vending	Pepperidge Farm
Feed the Children	St. Louis Cold Storage
Girl Scouts of Eastern Missouri	Straub's Fine Grocers
Gate Gourmet	Sysco Food Services
Global Trucking	Whole Foods

Cash Donations

\$1,000,000+

Anonymous	St. Louis County
-----------	------------------

\$250,000—\$999,999

Anonymous	Bayer Fund
-----------	------------

\$100,000—\$249,999

Anonymous	Missouri Foundation for Health
Community Impact Network	State of Missouri

\$50,000—\$99,999

Ameristar Casino St. Charles	MAZON
Anonymous	Estate of Jeanne McCormack
Miriam Ferguson	James and Susan McHugh
Estate of Rosemary Hoehn	Post Holdings
LBE Holdings LLC, DBA Hardee's	Sunnen Foundation
	United Way of Greater St. Louis

\$25,000—\$49,999

American Direct Marketing Resources Inc.	Jefferson Foundation
Anonymous	Dennis and Rebecca Muilenburg
Bank of America Charitable Foundation	Melitta S. and Joan M. Pick Charitable Trust
Becker Iron and Metal	Herman T. and Phenie R. Pott Foundation
Christian Hospital	RGA Reinsurance Company
Dickler Family Charity Remainder Trust	Louis Russo
ELCO Chevrolet Cadillac	Share Our Strength
Enterprise Holdings Foundation	SSM Health
Estate of John Everding	University of Missouri

Our Donors Make All Our Work Possible

\$10,000–\$24,999

Anheuser-Busch Foundation
Anonymous (4)
Ascension Health
Robert Bassett and Vicki Pohlman
The Boeing Company
Boy Scouts of America, Greater St. Louis Area Council
Andy and Donna Bresler
Bunge North America Foundation
Dan and Amye Carrigan
J & S Cochran
Deaconess Foundation
Deutsch Family Wine and Spirits
Dierbergs Markets Inc.
Mary Ann East
Edward Jones
Emerson Automation Solutions
Steve and Mary Frank
FRB Federal Credit Union
GiftAMEal
Joseph and Nancy Giljum

Give Back Brands Foundation
Stephen and Rebecca Hager
Jay Henges Charitable Trust
Husmann Corporation
Interco Charitable Trust
Marie Jacobs
Mary Junck and Ralph Gibson
Mike and Kate Kupstas
Gene Maier and Catherine Ingini-Maier
Andrew and Stephanie Martin
MasterCard International
Sharon Moran
Murphy Company Inc.
Anita and John O'Connell Family
Ralph and Mary Pelikan Protiviti
Qualified Benefits Consultants Inc. / Ekon Benefits
Rodger and Paula Riney
David and Kyra Robinov
Timothy and Mary Beth

Rodgers
Jeffrey and Sharon Rosenblum
Rabbi Elliot D. and Nancy S. Rosenstock
Erin and Jim Runnels
Stephanie Schnuck
Mary Schoolman
Shirley Sher
Spoehrer Family Charitable Trust
John D. Sprague and Carol W. Kohfeld
Square One Foundation
St. Louis Claim Managers' Council
St. Louis Jefferson Solid Waste Management
St. Louis Women's Creative LLC
Stern Brothers & Co. / Pepe and Terry Finn
Stout Industries Charitable Foundation
Norman J. Stupp Foundation - Commerce Bank, Trustee
Trip and Terri Straub
Tjootjim Foundation

Trio Foundation of St. Louis
Jane Tschudy
Raymond and Laurie Van de Riet Jr.
Warehouse of Fixtures
Stephannie White
William A. Straub Inc.

"\$82 of this donation is from my daughter, Abby, age 10. She raised the money by cooking baked goods and selling them to neighbors.

She called her little business 'Abby's Quarantreats' and wanted all of the money to go to Operation Food Search."

—St. Louis area mom and OFS supporter

Our Donors

Oct. 1, 2020 - Sept. 30, 2021

\$5,000–\$9,999

Diane Allen	Fritz and M.M. Gebhard	PNC Foundation	Anthony and Mary Trupiano
American Family Insurance	Mary Ellen Gipson Fellowship	Ruth M. Powell	Vi-Jon
Dreams Foundation	Neal Harwood	RIBUS Inc.	Webster Groves Presbyterian Church
Anonymous	Allen and JoAnn Hauge	Saigh Foundation	John and Sheila Welge
Janine and Newell Baker	Patrick and Gina Howley	Schmidt and Barton Family Fund	Wells Fargo Advisors
Nancy Bales	Kay Johnson	Seeger Toyota	Frances White
Carmen and Martin Blaylock	Robert Johnson	Janice Seele	Frederick Wiesehan
Leslie Bloom and Tom Mueller	John and Anne Jordan	Clay and Janice Semenkovich	
Lee Broughton and Chrissy Taylor	Chris and Jessica Kerckhoff	Neal and Linda Shapiro	
Kathleen and David Brunts	Martha Reitz Kratzer	Karen C. Smith	
Bryan Cave Leighton Paisner LLP	Susan Latorre	Skip and Elaine Spielberg	
David and Susan Burkhart	Clemence S. Lieber Foundation Inc.	Square Inc.	
Capital City Fruit Co. Inc.	Paul and Laverne Lorenzini	Thomas and Karen Stern	
W. Lee and Katie Capps	Andrew Maynard	St. Louis Auto Dealers Charitable Foundation	
Eric Christner and Kim Dunbar	McCarthy Holdings Inc.	The St. Louis Trust Company	
William and Trina Cotner	James Moranville and Jane Hanebrink	Students 4 STL	
Charles Cuny and Virginia Vasey	Lynn Morley	Everett and Geneva Sugarbaker Foundation	
Linda Dill	Robert Morley Jr.	Tim and Mary Sullivan	
Terry and Barb Donohue	Mosby Building Arts	William S. and Blair Y. Thompson Family Foundation	
Edison Family Foundation	Toni Murphy	George and Kathleen Timpe	
Enterprise Holdings Inc. - IT Department	National Cart Company	Simon and Mary Tonkin	
ESCO Technologies Foundation	Object Computing Inc.	Toyota Dealer Match Program	
ESCO Technologies Inc.	John and Valerie Paci	Tracy Family Foundation	
Ryan Eudy	Lisa and Dan Pelikan	The Tromblee Foundation	
David and Kathleen Fischhoff	David and Julienne Pernikoff		
Francis Coppola Winery LLC	James and Robin Pettijohn		
G & R Farms			

“You don’t know how much this helps. Our family took in a child whose parents both died six months ago, and due to the virus we haven’t been able to get any paperwork done. We didn’t have a lot of extra money before, but with another mouth to feed it has been really difficult. This food helps so much.”

—Recipient of food at St. Louis County Library drive-through distribution

Our Donors Make All Our Work Possible

\$2,500–\$4,999

AbbVie	Peter and Jane Conrad	Gregory Heille	Nancy Mietzner
Frank Adam Foundation	Continental Title Company	Florence Heiman Charitable Trust	Janet Miller
Timothy Adams	David and Jean Cowell	HERA Charitable Fund	Roger and Melissa Miller
Aero Charter	Kathryn Cox	Harlan Hodges	Millipore Sigma
Steve Akos	Lois Crampton	Julie Hupperts	William Moench Jr. and Pamela Stephans Moench
Grace Allen	Lisa Crissman	Jägermeister	Robert and Mary Morgan
Brad Anderson	Curium US LLC	Nanette Johnson	Elaine Moss
George and Brenda Anderson	Matthew and Rose Deffenbaugh	Kansas City Toyota Dealers Association	Jeff Mueller
William and Wendy Anderson	Dentons	David Katz	Joan Mueth
Anonymous	James and Nancy Donnell	Karl and Karen Kloster	NUSO
Cathy Barancik	E & J Gallo Winery	Robert and Caralmae Knickmeyer	Kenneth Obrecht
Ted and Susan Barr	Eckert's Country Store	Louis H. Kohler Foundation	Elizabeth Ortinau
Richard and Kathleen Becker	Employees Community Fund of Boeing	Christine and Jon Krueger	Mary Porbeck
William Becker	Equifax Workforce Solutions	Ladue Garden Club	Emily Pulitzer
Bryan Bell	ERB Equipment Company	Mont and Karen Levy	Paul Rancuret
Juan Bertolino	Erler Charitable Fund	Robert J. Lieber Charitable Trust	Willis and Rosemarie Ranney
Beyond Housing	Ernst & Young LLP	Lions Club International	John and Olivia Rasp
Blackhawk Network	Anna Etzkorn	Paul and Connie Lombard	Jeffrey and Ann Rayfield
Neal and Susan Bockwoldt	Craig Evans and Denise Phelabaum Evans	William Loyd and Nancy Rogers	Regional Business Council
Raymond and Dorothea Botz	Bernard and Marjorie Feldman	Bonnie Manion	Reitz & Jens Inc.
Michele Bourdeau	First Bank	James and Katherine Martin	Michael Renfro
Vance and Genelle Brakefield	Nancy Friedland	Joanna May	Rachel Roberts
Erin Brooks and Josh Udelhofen	Randell and Maureen Gelzer	Philip and Jeanne McDermott	Henry Robertson
Phil and Judy Cagney	Kenneth and Kathleen Graesser	Emily McDonnell	Roeslein and Associates Inc.
William and Janet Campbell	Great Southern Bank	William and Dyann Menzel	Michael and Judy Ruffus
Campbell-Avery Fund	Nancy Grove	The Meyer Family Fund of InFaith Community Foundation	Jennifer Sakurai
Cigna Matching Gifts	August Hattrich	Midland States Bank	John and Betsy Samet
Commerce Bank			

Our Donors

Oct. 1, 2020 - Sept. 30, 2021

\$2,500–\$4,999 (continued)

Sander Foundation	William and Darlene Skaggs	Tech Electronics Inc.	Washington University in St. Louis
Willem and Jenifer Schilpzand	Todd and Laura Smith	Irene Thalden	Jerry J. Wilson Memorial Foundation
Christopher Schimweg	Spectra Painting Company	Toyota Financial Services	Window Nation LLC
Amanda Schoonmaker	Mary Ann Srenco	UMB Bank	Patricia Woodward
Helen Schrader	Roseann St. John	Union Avenue Christian Church	James Workman
Alan and Judy Schultz	Louis R. Stark	United HealthCare Services Inc.	World Wide Technology
Mark and Anna Sears	Joan M. Stepzinski	Connie Van Fleet	
SFW Partners LLC	Laura Stewart	Volpi Foods	
L. David Sibley and Wandy Beatty	Karen A. Strobach	Wahl Family Gift Fund	
Nancy Siteman	Summit Distributing	Cynthia Walker	

\$1,000–\$2,499

9 Mile Garden	Opal Andrews	Ann Barfield	Carol and Rick Bender	Joyce Best
Elliot Abbey	Anonymous	Barks Family Foundation	John and Patricia Bender	Patricia Bieg
Paul and Donna Abrams	Karen Armour	Blake and Jane Bastien	Toby Benis	Dolores Bieger
Richard and Stephanie Ackerman	Charles Armstrong	Thomas Bauer	Debbie Bennett	Mark Bierk and Stacey Stater
Kelvin and Karen Adams	Bruce Arnold	Greg and Melissa Baumann	Cary and Dede Berg	James Biggs
Joe Adorjan	Jane Arnold	Mary Baumann	John and Christine Berg	Catherine Bishop
AIG	Kristina Arnzen	Gerard & Terry Bava	Daniel Bergmann and Debra Dill-Bergmann	Blacks Ridge
David and Maureen Albrecht	Norman and Marie Atkins Charitable Trust	Erin Beal	Karen Bergmann	Robert and Mary Jo Blankemeyer
Allen-Birge Charitable Trust	Mary Austin	Michael and Sandy Becker	Claude Bernard	Bliss Charitable Trust
Amy Altholz	Jay Aylsworth	Robert and Kathryn Becker	Sam Bertolet and Helen Ziercher	Deborah Bloom and Christopher Carson
Amy Amelung	Elicia Bailey	Judy Beckwith and Justin Mauzy	William and Nancy Besemer	Barbara Bluestone
Lori Anderson	Richard and Iona Baldwin	Gregory Bedell	Suzanne Besnia and Victor Richey	Michael Boelter
Richard Andren	Diane Balogh	Pamela Belloli		Louis and Mary Bonacorsi

Our Donors Make All Our Work Possible

\$1,000–\$2,499 (continued)

Kimberly Bonin	Carmel Calsyn	Crestwood-Sunset Hills Rotary Club	Mary Dinauer	Fischer-Bauer-Knirps Foundation
Arthur and Alison Bourey	William and Kathleen Carmody	Judy Crews	Kenya Ditto	Charles Fisher
Jay Bowman-Kirigin	Teri Carrington	Ryan and Cynthia Cuba	Rick Dopuch	Norman Fishman
David Bradshaw	Dorothy Carroll	Dairy Farmers of America Cares Foundation	Scott Durden	Susan FitzGibbon
David and Andrea Braun	Catholic Charities	Mackenzie Daly	Patricia Duvall	Julie Flory
Michael Brave	Gil and Erin Cattoor	Michael and Marcia Daniels	Matthew and Sue Easley	Rachel Foster
Nancy Breier	Linda Cerutti	Danna McKittrick, P.C.	Mark Eggert and Julie Tang	Roger and Carole Foster
Gina Bremehr	Raghavan and Sumitra Chakraverty	Ronald and Patricia Danzer	EIBS LLC	Zach and Janie Foster
William and Ann Brenner	Kelly Childs	Mike and Sue Darcy	Marion and Seth Eisen	Judith Fox
John and Laura Brink	Chod Family Foundation	Thomas and Barbara Daugherty	Kathleen and Steve Eiser	Franciscan Sisters of Mary
Margaret Brockmann	Kathleen Chott	Michael and Brenda David	Ryan and Laura Ellen	Karen Freeman
Robert Broderick	Paul and Susan Christopher Church World Service Inc.	Sonya Davis	Mary Enterman	Kathryn Freese
Clayton C. Brown Family Foundation	Michelle Clark	Grace Day	Alejandro Espinosa	Mark French
David Brown and Cheryl Green	Rubie Clay	Theodore and Deborah Dearing	Evans Production Engineering Co.	DeLaurian Viviano Friedman
Morton and Barbara Brown Jr.	Kyle Coady	Charles Debord	Helen Evers	Kirk and Alice Fritsch
Dr. Jane Brownstone	Christine Cocayne	Jerome S. DeClue	Glenn and Dianne Ewing	Walker Gaffney
Melanie Bryan	Lois Coder	Jeffrey and Susan Dee	The Exponential Group LLC	Jill and Brett Gaither
Laura Bryant	David Cole	William and Marjorie Deemer	David and Lelia Farr	Charles and Lori Gallagher
Lee Bryant	Jennifer R. Cole	Janet Deetz	Federal Bar Association	David B. and Alice W. Galt
Nik and Gina Brym	Ryan Colvin	Dell Technologies	Tricia Feibig	Georgene Gann
Buckner Family Charitable Foundation	Michelle Conlon and Robert Thompson	Ronald and Sue Dellbringge	Angela Felton	Diane M. Garea
Angelo and Pamela Bufalino	Chris Connolly	DEMA Engineering Company	Nancy Ferriss	Sarah Garwood
Laurie Burch	Dennis and Sharon Corcoran	Kristin Denbow	Brian and Michelle Fiedler	Gemini Wealth Group
Susan Burns	Anthony and Leslie Corey	Dale Dendtler	Fifth Third Bank	Christopher Georgen
Burns McDonnell Foundation	John and Tracy Corrao	Cara Denney	Richard and Dianna Fine	Thomas Gephardt
Chris and Matt Burridge	Stephen P. Cortinovis	Glenn Detrick	Lance Finney	Edward J. Giganti
Stephen Burrows	Gary and Jane Cox	Jonathan and Jennifer Deutsch	George Fiorini	Bridget Girdner
Donald Busiek	Brian and Judy Coyman	Jeri Devereaux	First Congregational Church of Webster Groves	Jonathan Giszczak
Philip and Candace Cady		Donald and Nancy Diemer	Suzanne Fischer	Gina Glackin
				Joel Glassman and Katherine Cochrane

Our Donors

Oct. 1, 2020 - Sept. 30, 2021

\$1,000–\$2,499 (continued)

Global Food Market	Dwight Hardin	David and Julie Hohman	Margaret Katranides	Warren and Susan Lammert
Michael Goldey	Michael and Debra Harres	Mark and Margaret Holly	Beth Kazlauskas	David Landau and Marybeth Pereira
P. Wayne and Jane B. Goode Foundation	Peggy and Larry Harris	Jim and Shirley Holten	Tom and Monica Keeline	Mary Lane
The Goodfellas Investment Fund, LLC	Elizabeth Harrison	Holy Redeemer School	Robert Keithley	Leanne Latuda
Elizabeth Goodman	Julie Hartell-Denardo	The Home Loan Expert	Miriam Keller	William Latz
Google Matching Gifts Program	Steven and Elizabeth Haupt	Ashley Hornsby	Barbara Kelley	John and Laura Laughlin
Abraham Gootzeit and Irene Holubec	Mary Hawker	Harold and Ethel Horowitz Family Foundation	Maura Kelly	Jenny Lauth and Jason Muelver
Michele and Mark Gorski	David and Kathy Hawkins	Luciann Hruza	Paul Kerkemeyer	Lawrence and Karen Lavin
Thomas Gow and Karen Witmer-Gow	Virginia Heagney and James P. Tobin	James and Phyllis Huettner	Harold and Barbara Kiehl	Michael Lawson
John and Marian Gravlin	Janet Heath	Kayci Huff-Hardy	Sophi Kim	Jack and Debora Lay
Sandy Gray	J. Edwin Heathcock and Elizabeth Porter	Rosemarie Hughes and Kathleen Wolff	June King	Micki Le Sage
William and Nancy Gray	Kate Hebson	Susan K. Hume	Joe and Dawn Kinsella	Jake and Anna Leath
Lisa Greenberg	Rachel Hedgecorth	John and Kathy Hungerford	Katherine Kirby	Richard Lederich
Lisa Grimes	David and Jean Helm	Michael and Barbara Hurst	Christy Kisor-Leong	J. David and Susanne Leech
Larry and Angelynn Gross	Laurain Hendricks	Illinois Beef Association	Jerry and Gerry Klein	Melvyn Lefkowitz
Michael and Paula Gross	Genevieve Herman	Lisa Imbs	Ward and Carol Klein	Robert and Janet LeGrand
Gretchen Grote	The Herrfield-Redling Giving Fund	David and Roberta Imig	Richard Klohr	Mark Leifield and Lynn Rowan
John Gsell	Erik Herzog and Mary Bargerone	Intoximeters	Chris and Sandy Knight	Barbara Leitle and Paul Mounts
Thomas and Kathleen Gunn	Michael and Sallie Herzog	Janice Ittner	Christine and Thomas Knoten	Ned Lemkemeier
Karen Gupta	Joann Hetisimer	Richard Jackson	Michael Kohn	Antonio Leon
H & H Health Associates Inc.	Sharon Heuermann	Geralyn Jacob	Drew and Charli Kreienkamp	Greg and Alyson Levine
Ralph and Norma Jean Haag	Andy and Anita Higginbotham	Thomas and Emily James	Barry and Sherilyn Krell	Jeffery and Louise Levine
Dennis and Donna Hall	Virgil and Joan Hill	Mike and Kathy Jay	Brian and Ame Krippner	William Lewis
Bruce and Laura Halliday	Travis and Alison Hillen	Dean and Cheryl Joerling	Andrew and Sarah Krueger	Kevin and Karen Lickenbrock
William and Lois Hamrick	Tom and Jennifer Hillman	John and Pam Johnson	Daniel and Gloria Kweskin	Lighting Associates Inc.
Donald and Ann Hannon	Rich Hoenig	Ronald and Debra Johnson	Ladies Club of Brookdale - Creve Coeur	Diana Likely
Donald and Linda Hardin	Lesley Hoffarth	Sandra Johnson	Thomas and Noreen Laffey	Paula Limbaugh
		Cynthia Jones	Howard and Bonnie Laiderman	Casey Limmer
		Maryellen Judge	Richard and Judith Laitman	Daniel Linck
			Leonard Lammert	Linde Family Charitable Fund

Our Donors Make All Our Work Possible

\$1,000–\$2,499 (continued)

Lindell Development	Jaimette McCulley	Robert Morgan	O'Hara Outdoors	Marshall and Sharon Podolsky
Christopher J. Lingle	Tony and Joellen McDonald	Harvey and Darlene Morris Jr.	Chuck Orban	Anna and David Poger
Keith and Erin Linnenbringer	Joan McGivney	James Mosblech	Henry and Ilene Ordower	Julie Porfirjeva and Aaron Freidenberg
David and Marilyn Lipman	William and Patricia McKelvy	Jim Mosley	Ottolino Winters Huebner Inc.	Colin Postlewaite and Alleen Betzhauser
Cherri Loehr	Tom and Nancy McLaughlin	Mueller Prost LLC	Carrie Pace	Mary and James Powers
Samantha Long	Doris McMahill	Joseph Munshaw and Colleen Hennessy	Matt Padberg	Steve and Mary Pownall
Carmen Lubbert Fischer	Valinda McPhee	James and Nancy Murphy	Paese Family Foundation	Patricia Prager
Inna Lukashevsky	John and Connie McPheeters	Margaret Murphy	Lawrence Page	Nathan Prange
Luxco	E. Jane Means-Hinton	Musick Construction	Kathryn Palacio	Daniel Pribe
Paul Macon	Kristen Medlock	Michael Nagle	Panera LLC	Kip Priesmeyer
Mama Celeste and H Fund	Medtronic	Ram and Rashmi Nair	Kurt and Abby Pankau	Jennifer Pruehsner
Man Cave Meats	Members 1st Credit Union	Mary Neal	Pantera's Pizza - O'Fallon	Prufrock Foundation
Kathy Manganaro	Mark and Marsha Mertens	Neeb Family Foundation	Paradowski Creative	Jeff and Sara Purple
Amanda Mangold	Lee and Barbara Meyer	Nina Needleman	Warren Patton	Simon and Vickie Pursifull
Many Options Syndicate	Michael Meyer	Alice Nelsen	Pecha Family Foundation	Quiet Village Landscaping
Amy Maranto	Rich Meyers	George and Barb Nelson	Percheron Investment Management	Susan Rainer
Marian Foundation	Milton Mill	Charles and JoAnn Nester	Raymond and Cynthia Peters	Jane Rand
Chuck and Jennifer Markwardt	Virginia Miller	Debra Neustadt	Robert W. Peterson	Steven and Alisa Range
Joette Martin	Mary Carol Millsap	Billy Newton	Deloris Petty	Lioba Rao
John E.S. Martin and Kris Zapalac	Robert Millstone	Timothy and Mary Ney	Jeff Pfankuch	Rao Family Charitable Account
Joann Mattingly	Millstone Foundation	Ruth Nickerson	Pfizer Foundation Matching Gifts Program	Raymond James
Catherine Matula	Joseph and Kathleen Mischik	Kenneth Niemeyer and Clare Wefelmeyer	Jane Pharis-Oliver	Asim Razzaq and Luz Robles Razzaq
Elizabeth Maxeiner	Diane Mispagel	Patrick Nolan	James Phelan	Kristy Reed
Margie May	Missouri Beef Industry Council	Susan Novack	Guy and Kim Phillips	Ellen Reed-Fox and Tim Fox
Darren Mayes	Missouri Corn Merchandising Council	James and Marcia Nusz	Piacentini Family	Jackie Relaford
Marcia McCabe and John Raney	Thomas and Cynthia Mitchell	Trudy Oberbeck	David Piston	Mia and Michael Rethorn
Kevin D. McCarthy	Subhash and Manoharlata Mohan	Shawn and Julie Oberreiter	Matthew Pitlyk	Michelle Reynolds
McCarthy, Leonard and Kaemmerer LC	Frederic Mohr	Susan H. O'Grady	Pittsburgh Pipe	Margaret Rich
Jasmine McCormick	Doug Moise	Carol O'Hallaron	Julie Plax	
	Donna Moog			

Our Donors

Oct. 1, 2020 - Sept. 30, 2021

\$1,000–\$2,499 (continued)

Richman Holdings LLC	Sunny Schaefer-Edwards	John Shelley	Margaret Storey	Church
Kathryn Richter	Clare Schallert	Diane Sher	Robert and Pamela Stover	U.S. Bank
Kenneth and Ruth Riney	Paul and Evangeline Schaper	Barbara and Ely Shrauner	Ryan Strong	Kellie Vahey
Jay and Lisa Ring	Stephanie Scherer	Jackson and Jennifer Sieber	Dawn Stroup	Nancy Van Dyke
Gregg and Ann Ripp	Jackie G. Schirn	Kenneth and Roselyn Simila	Dan and Suzanne Struempf	Vanguard Truck Center of St. Louis
Rivertree Community Church	Jeffrey and Sharon Schneider	William Sippo and Family	Stephen and Angela Strum	Shirley Vanhorenbeeck
Donald Rogers	Douglas Schmidt	Deborah Slagle	Laura Stuetzer	Vistage Worldwide Inc.
Peter and Susan Rogers	Schnarr's Hardware Company	Mary Slagle	Maria Suiter	Gary and Tina VonderHaar
Miranda Root	Paul Schnoebelen	Charles and Denice Smith	Margaret Sullivan	Amy Wachs
Marian B. Rosen and Jon Goldberg	Schnuck Markets	Gerald Smith	Walton and Carla Sumner	Elizabeth Wagner
Judy Rosenberger	Mary Ellen Schraeder	Phil Smith	S. Joshua and Victoria Swamidass	Richard Leo and Sandra Kay Wahl
Ross Family	Gilbert and Linda Schroeder	Thomas and Sandra Smith	Ieva Swanson	Steven and Melissa Wallach
Gretchen Ross	Nancy Schuehler-Harris and Jeff Harris	Snively Family Charity Fund	Jack and Betty Swanson	Mary Walsh
Stephen and Catherine Ross	Jeff Harris	Jeanne Snyder	James Tabor	J.R. and Mia Walters
Rouff Family Charitable Fund	Amy Schuster	Agnes Sobel	Tabor Plastics Co.	Gerald and Jaculin Wankum
Sharon E. Rowe	Ken and Patricia Schutte	Cory J. Spielberg	Tamarack Foundation	Scot Ward
Amy Ruck	Michael Schwartz and Clara Perry	Jennifer E. Sprague	Richard David Taylor	John and Pamela Warner
Emily Rumora	Allan and Susan Scott	Steve and Tricia Spratt	Robert Thill	Thomas and Holly Washeck
Sally Russell	Fredna Scroggins	St. Clair County Farm Bureau	Josh Thomas	Richard and Suzanne Weaver
David Rutkowski	Lyle and Bill Seddon	St. Louis Chapter Sior	Jerome Thomasson	Mark Weber
John and Leah Saguto	Jennifer Seeser	St. Louis County Farm Bureau	Heather and Chris Thompson	Patricia Wedner
Jacqueline Saito and Paul Matz	Deborah Seidel	Saint Louis University	Robert and Jan Thomure	Ron and Ginny Weil
Lauren Sallwasser	Eric and Nancy Seiler	J. Kent and Candy Stallings	Jon Tiede	Carol Weisman
Barry and Dana Sandweiss	Jonathan Serkes	Robert Standley	Amber Tompkins	Peter Weiss
Frank Sandy	ServiceNow	Robert and Sandra Stearns	Josh and Marlene Toso	Karen and David Weller
Gary Sansone	Jan Sessions	Patrick and Jessica Stephan	Patrick and Jane Tracy	Hal and Amanda Wellford
David and Jamie Sauerburger	Bruce Shapiro and Liz Guthrie	Rick and Malette Stevens	Truck Centers Inc.	Beverly Wells
Daryl Scales	Debra Shatoff	Joe Stevenson	Dolores Tucker	Christian Werstein
Schactman Family Charitable Gift Fund	Susan Sheehan	Scott and Jennifer Stewart	David Turner	Jeffrey West and Laura Koontz
	Nikhil Shekar	Thomas and Tiffani Stewart	Unity Evangelical Lutheran	
		Cary G. Stolar		

\$1,000–\$2,499 (continued)

Lawrence and Stephanie
Westermeyer

Jean Wetzel

Penny J. White

Todd White

William and Marcia Whitson

Mark and Marla Whittenburg

Travis Widman

Deborah Wiese

Kristen Wild

Larry Willick and
Lori Goldman

Luther and Carolyn Willmore

Vernon and Kathleen Wilmes

Robert and Joyce Winkler

Stephen Wintermann

James and Kathryn Wire

Lance Witcher

Janelle Wohrley

Joseph and Carolyn Wojtal

Pamela Wollenberg

Wong Family Foundation

Jim Wood

Sun John and Li-Pai Yuen

Lon and Judy Zimmerman

Zurich American Insurance
Company

Hunger Healers

A special thank you to our more than 500 monthly donors, who contributed nearly \$245,000 in FY2021. These valued advocates sustain our work while ensuring consistent access to the funds OFS needs to heal hunger.

Thank You for Supporting Our Mission to #HealHungerSTL

The passion and caring of Operation Food Search donors, volunteers and partners enable us to provide both food and hope to others. We are grateful for the many forms of support we receive.

Donate

Donate.OperationFoodSearch.org

Volunteer

Volunteer.OperationFoodSearch.org

Give Food

Food.OperationFoodSearch.org

Spread the Word

 /OpFoodSearch

 /OpFoodSearch

 /OpFoodSearch

 @OpFoodSearch



Greater St. Louis

OperationFoodSearch.org

1644 Lotsie Boulevard, St. Louis, MO 63132

(314) 726-5355